

PAWS Application Note 03 (rev. 3)

PAWS Developer's Studio: Profile Manager

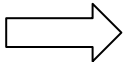
Profile Manager Overview

The profile manager tool allows the end user to control the appearance and functionality of PAWS Developer's Studio using the concept of profiles. The manager of a project can configure each installation based on the needs of the users. The main use of this tool is to ensure that the various members of a project have access to the tools they need to successfully complete their tasks while restricting access to unnecessary or undesired features.

Profile Manager and License Manager

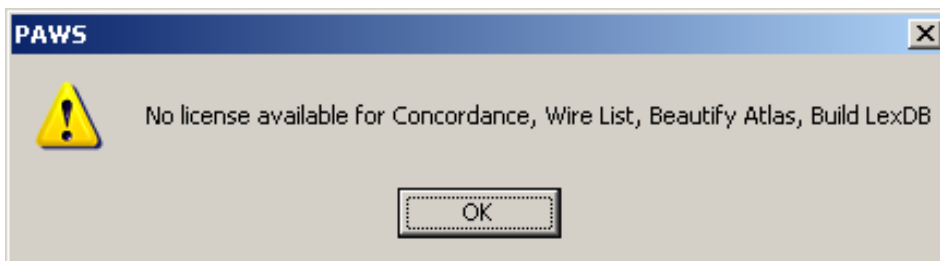
Another use of this tool is to control how each system attempts to access tools that are protected using the license manager. By default, when the Developer's Studio is run, it tries to access the license for each TYX tool protected with the license manager. If a license is available, the Studio will take it.

However, if a license is not available, a dialog box will be displayed each time the Developer's Studio is launched indicating that no license is available. These dialog boxes, which can be a nuisance, will stop displaying when the profile manager is used to stop the Studio from attempting to access these tools.



Important Note for users installing PAWS Studio for the first-time:

If you did not buy licenses for all Studio products, you will get a message like the one below each time you open studio:



With nodelock licensing, the message will pop up quickly, so the user could simply click ok and start using studio. However, with networked licensing, the user will experience a delay as the license manager searches for a key for each product listed. **To prevent this message from appearing each time you open Studio, use the profile manager function to change the profiles.**

A detailed example of how to configure a profile is provided on the pages that follow.

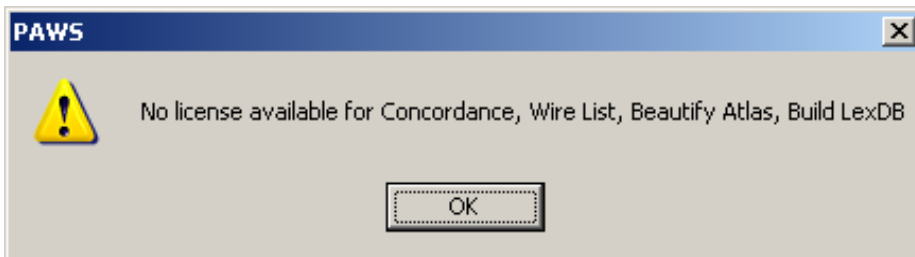
A Detailed Example of How to Configure a Profile

For this example, assume that you purchased PAWS Studio with the following products:

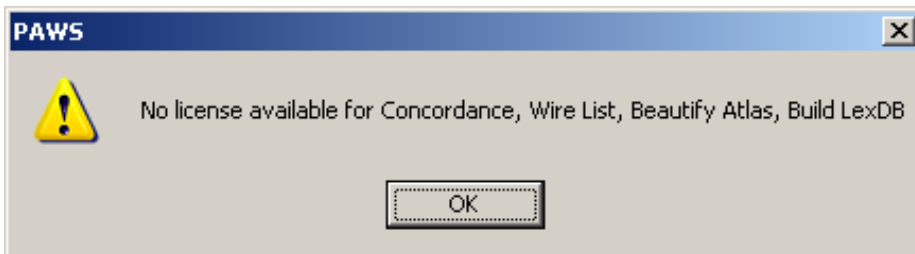
- 9500 Studio
- 9502 Simulator
- 9503 Debugger
- 4628 Compiler

Assume you have done the following steps already:

- Installed PAWS Studio
- Installed TYX license manager software (if floating licenses are used)
- Copied into place the license file (provided by EADS NA T&S)
- Open PAWS Studio. In this example, you would see the following message:



- click 'ok'
 - in the 'New PAWS Project' window, select a sample project name (e.g. test), click ok
 - from the menu bar of PAWS Developer's Studio, select 'View', 'Toolbars and Docking Windows', 'Change profile'
 - in the top cell of the 'Select profile' window, toggle to 'Supervisors'
 - in the lower cell of the 'Select profile' window, enter the password: `paws123`
 - click 'ok'
- the license message will appear again (that's ok!):



click 'ok'

- Next, from the menu bar of PAWS Developer's Studio, select 'View', 'Profile manager'
 - double-click on 'Operators'
- the 'Profile properties' window will open
- in the General tab, check 'Customize all' (**do not** click 'ok' yet)
 - select the 'Docs and Tools' tab.

continued on next page ...

- in the lower window, 'uncheck'
 - Concordance
 - Wire List
 - Beautify Atlas
 - Build LexDB
- click 'ok'
- Next, double click on 'Supervisors'

the Profile properties window will open
- in the General tab, make sure 'Customize all' is checked **(do not click 'ok' yet)**
- select the 'Docs and Tools' tab.
- in the lower window, 'uncheck' the following:
 - Concordance
 - Wire List
 - Beautify Atlas
 - Build LexDB
- click 'ok'
- click 'ok' again

To test it, exit PAWS Studio. Re-open PAWS Studio. The license message should no longer appear.

Note on the example above: Be careful not to 'uncheck' something that you actually bought (e.g. Build LexDB, if that is a product that you bought.. The instructions above are merely an example). To identify the proper items to 'uncheck', please read the license message that you see.

Changing the Password

While still logged in as supervisor ((detailed steps in previous section):

- from the menu bar of PAWS Developer's Studio, select 'View', 'Profile properties'
- in the General tab, enter the new password in the two cells (the second cell is for confirmation)
- click 'ok'

Creating a New Profile

Log on as supervisor (detailed steps in previous section. If you changed the password for supervisor, be sure to use the new password). Then, to create a new profile:

- select 'View', 'Profile manager'

Note: the default profile, Operator, is indicated with a green arrow. The default profile is the profile that is used each time the Studio is launched.

- select 'Add' to create a new profile
- enter the name of the profile. If this is to be the default profile for this system, select the Default profile checkbox. The default profile can not be password protected.
- click 'ok'
- click 'ok'