

TYX CORPORATION

Productivity Enhancement Systems



PAWS Studio Release Notes

Version 1.39.8
March 5, 2012

Table of contents

1	Paws Developer's Studio	3
1.1	Critical Items	3
1.2	Known Limitations	3
1.3	Enhancements	3
1.4	Problem Reports	3
1.4.1	ControlRTS.h Compiling Error	3
2	Run Time System	4
2.1	Critical Items	4
2.1.1	Java GraphicsViewer for IFTE and ESTS runs with JVM6	4
2.2	Known Limitations	6
2.3	Enhancements	6
2.4	Problem Reports	6
2.4.1	ErrMsgBits CEM API failure fixed	6
2.4.2	PR 07068 Slowdown of JAVA GraphicsViewer	7

1 Paws Developer's Studio



Version 1.39.8

Release date: March 5, 2012

1.1 Critical Items

1.2 Known Limitations

1.3 Enhancements

1.4 Problem Reports

1.4.1 ControlRTS.h Compiling Error

When C:\usr\tyx\include\controlRTS.h was included in CEM or NAM projects configured to use UNICODE characters, it generated a compiling error. This issue has been fixed. Our present controlRTS.h gets compiled successfully, regardless of the configured character set (UNICODE or Multi Byte) of the project that includes it.

2 Run Time System



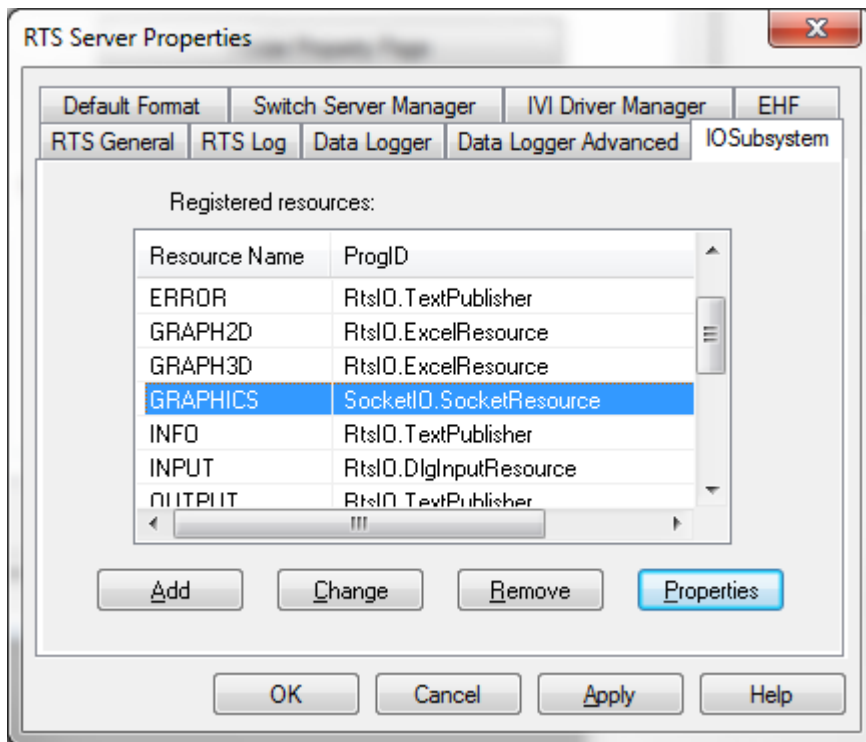
Version 1.39.8

Release date: March 5, 2012

2.1 Critical Items

2.1.1 Java GraphicsViewer for IFTE and ESTS runs with JVM6

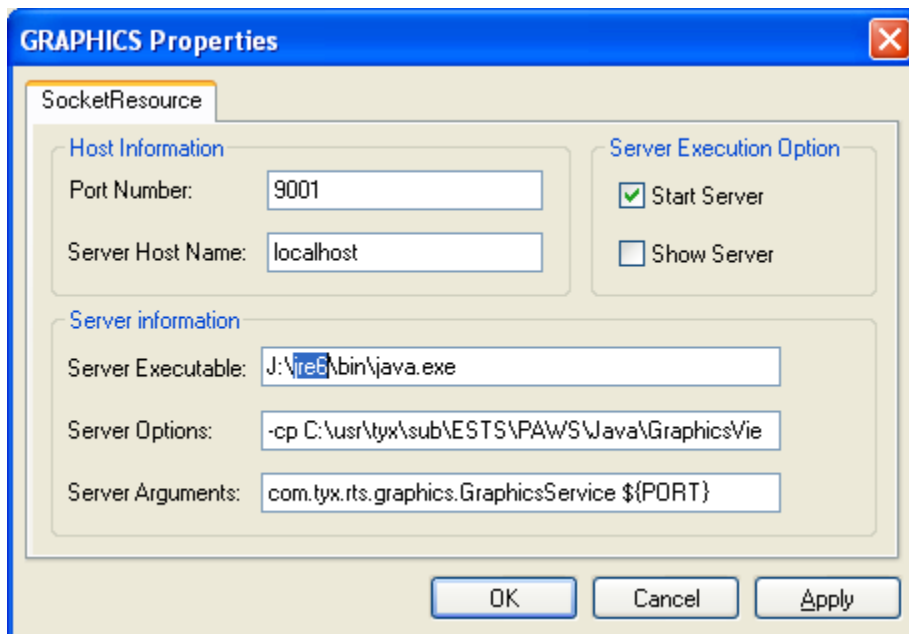
Our previous IFTE and ESTS customers that want to update their Paws Studio and RTS software with this version, need to open the RTS, go to Control | Options | Property Pages, select IOSubsystem tab, then identify and select the GRAPHICS resource:



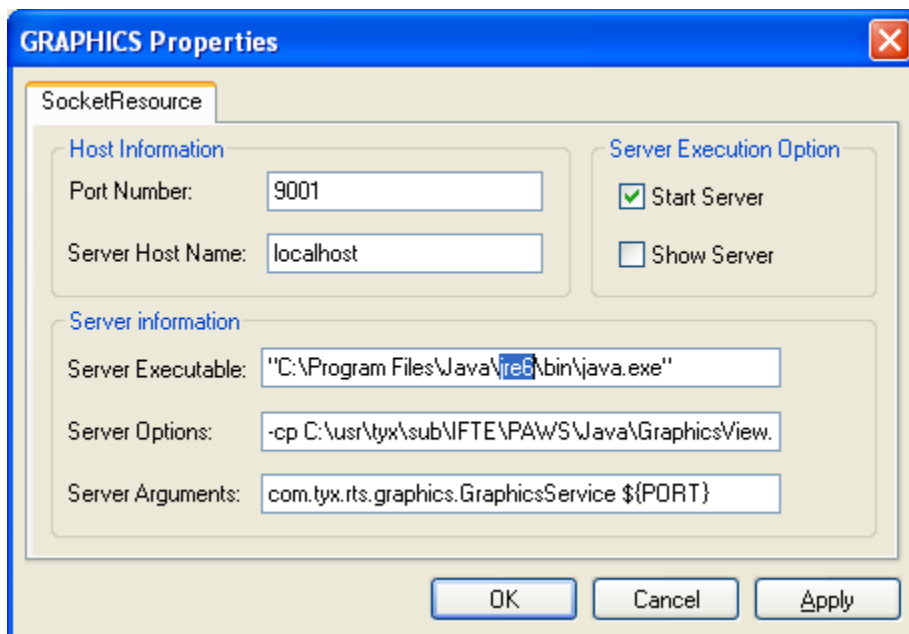
If the GRAPHICS resource is not found, or its ProgID is different than SocketIO.SocketResource, then no action is needed. This is the case for the customers that have different subsets than IFTE or ESTS.

Properties button needs to be clicked.

All the references to Java Virtual Machine 1.4 or JRE4 in the Server Executable edit control have to be replaced with references to JRE6, like in the pictures below:



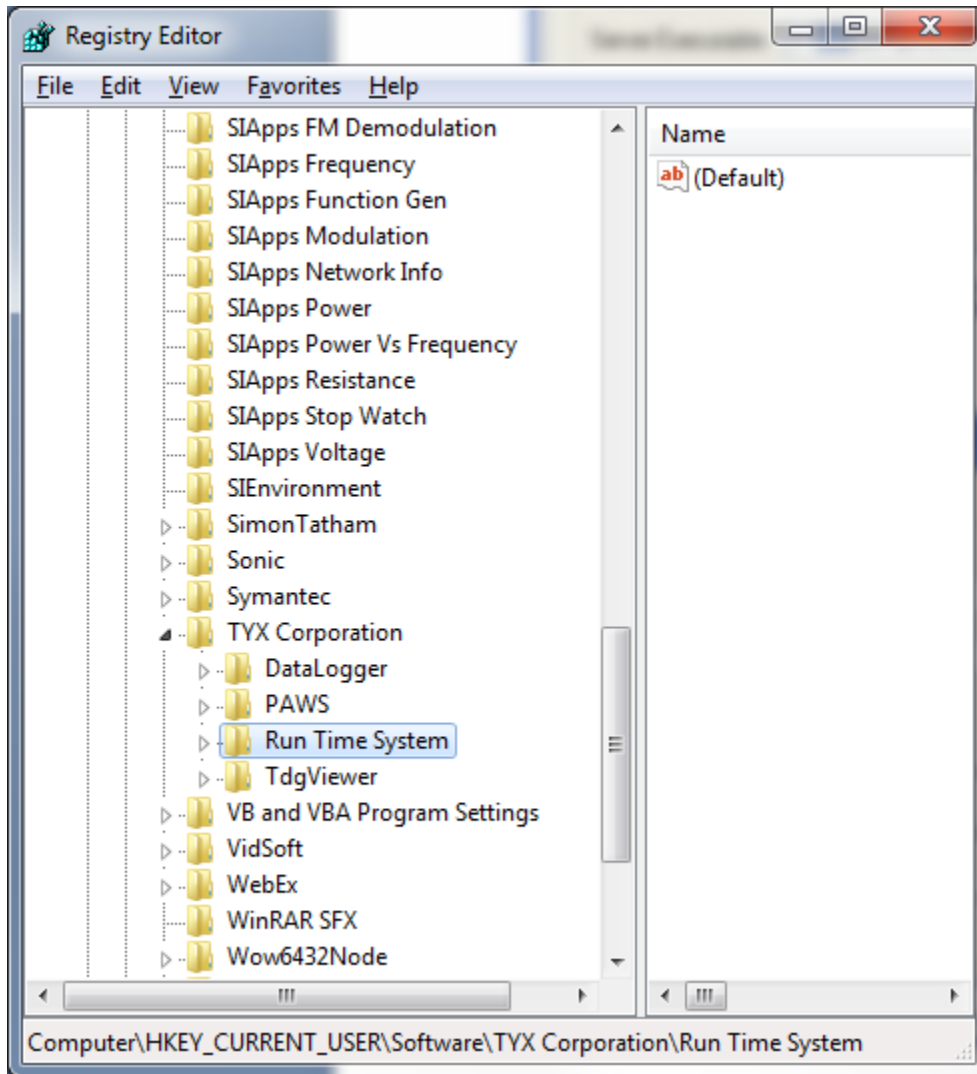
Or



Important note:

Most IFTE and ESTS customers receive customized installing CDs that also upgrade their C:\Windows\Wrts.ini file. In order to have the WRTS retrieve the JRE6 aware up-to-date configuration from Wrts.ini file, our customers have to delete the following registry entry:

Computer\HKEY_CURRENT_USER\Software\TYX Corporation\Run Time System



2.2 Known Limitations

2.3 Enhancements

2.4 Problem Reports

2.4.1 ErrMsgBits CEM API failure fixed

When the RTS loads its CEM in a ComCem.exe process in order to run it in a MULTI-THREAD COM apartment, ErrMsgBits API fails to function. This error rose as a result of poor COM communication between the ComCem.exe process and Wrts.exe process.

This circumstance is recognized if the busconfi file describes the CEM bus using the keywords : CEM LIB, LIB, and HOST as below:

```
WCEM\DMM.cpp  test.atl  Bus Configuration: Local x
; IEEE-488 Bus Configuration File -
"CEM Lib" 1 LIB "C:\usr\paws\WCEM.dll" HOST local
DMM      BUS 1
```

This error is fixed.

2.4.2 PR 07068 Slowdown of JAVA GraphicsViewer

This problem report documents the situation when the Graphics Viewer begins to slowdown after running some rather intensive graphics related tests – a large amount of data is being passed to and displayed on the graphics window. This slowdown continues as the test is repeated and ultimately leads to minutes of lag between when the WRTS executes the last statement and when the measured value gets displayed on the graphics window.

This problem has been resolved.