

TYX CORPORATION

---

Productivity Enhancement Systems



# PAWS Studio Release Notes

Version 1.37.13  
September 30, 2009

# Table of contents

<b>1</b>	<b>Paws Developer's Studio</b>	<b>3</b>
1.1	Critical Items	3
1.2	Known Limitations	3
1.3	Enhancements	3
1.3.1	New ATML Switches module support in PAWS Developer's Studio	3
1.4	Problem Reports	4
<b>2</b>	<b>Run Time System</b>	<b>5</b>
2.1	Critical Items	5
2.2	Known Limitations	5
2.3	Enhancements	5
2.4	Problem Reports	5
2.4.1	PR 09084 Enhancement Request for Nam.dll	5

# 1 PAWS Developer's Studio



Version 1.37.13

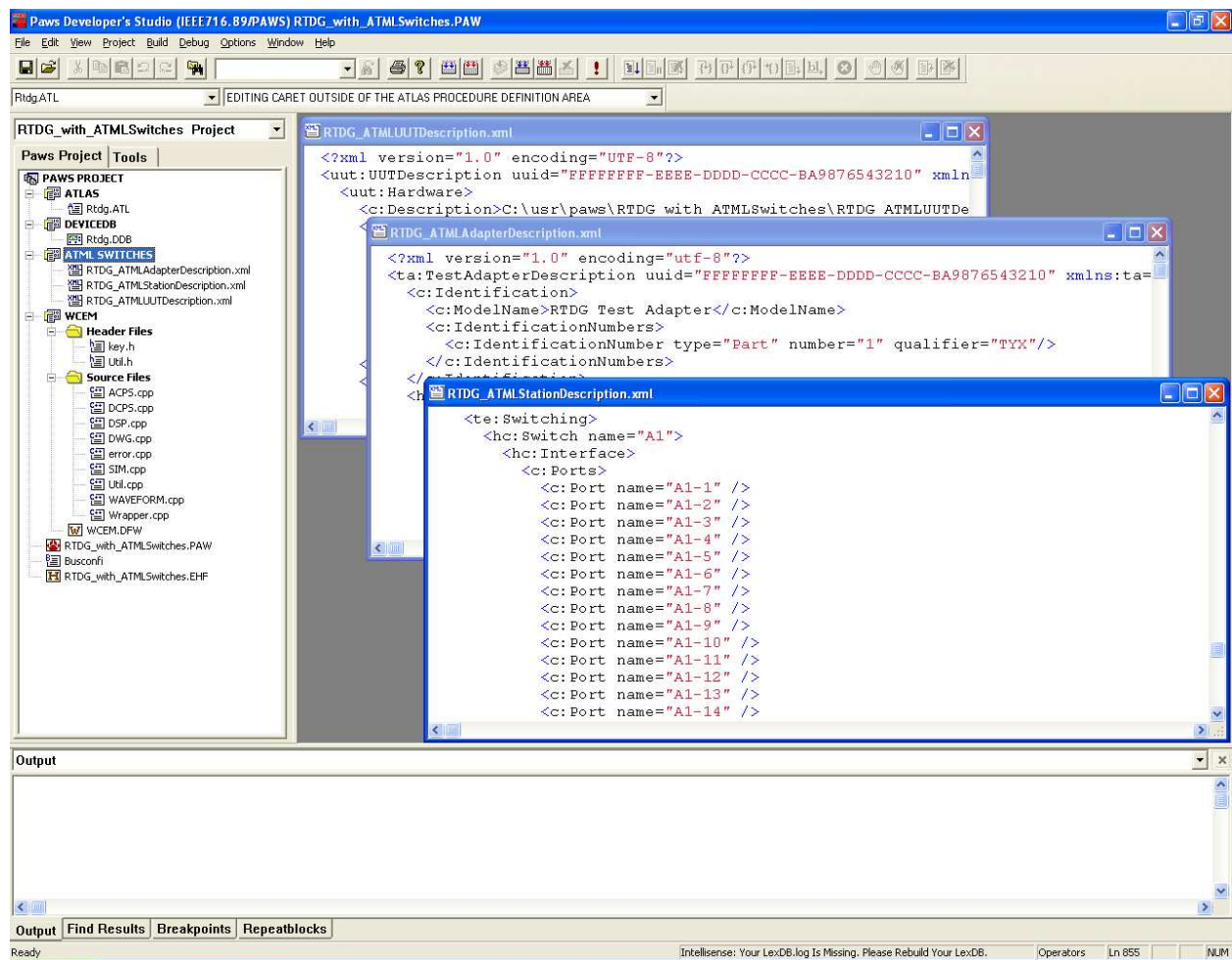
Release date: September 30, 2009

## 1.1 Critical Items

## 1.2 Known Limitations

## 1.3 Enhancements

### 1.3.1 New ATML Switches module support in PAWS Developer's Studio



The IEEE Automatic Test Markup Language (ATML) family of standards allows Automatic Test Systems (ATS) to perform information exchange in a common format (i.e. adhering to the Extensible Markup Language XML). These standards have been published and have been promoted for use by the industry.

In lieu of the above, PAWS Developer Studio has been updated to promote use of this standard by allowing users to develop their TPS's using the extensible markup language and creating their own Test Station Description, Test Adapter Description, UUT Description etc.

TYX Corporation is committed to the cause of Open Systems approach in development of TPS's, and thus demonstrates capability of support for ATML standards is in generation of Test Diagrams, which is an important support document for the test program operator and is used/referred to throughout the TPS life cycle.

Figure above, shows a PAWS project that has an **ATML Switches** module. A user may add extensible markup language files pertaining to Test Station Description, Test Adapter Description, UUT Description etc, based on the ATML Schema standards distributed under '`<usr>\bin\ATML Schema`' folder. On performing a build of the project, PAWS Developer Studio will internally generate the Switch and ITA database by parsing and extracting various elements defined within the ATML Standard. The Run Time System then uses the SWX file created to generate the Test Diagrams during run-time.

A modified demonstration PAWS project '`RTDG_with_ATMLSwitches`' is distributed under '`<usr>\tyx\src`' which contains the xml files for Test Station Description, Test Adapter Description, UUT Description as a model for users to develop their own '**ATML Switches**' module.

**Note:** There is a PAW file version update with this version of PAWS Developer Studio software. Old project files opened with this version of software will automatically be updated. Users who work with same PAW projects with different versions of PAWS should backup their old PAW file for use with older versions (if necessary).

## 1.4 Problem Reports

## 2 Run Time System



Version 1.37.13

Release date: September 30, 2009

### 2.1 Critical Items

### 2.2 Known Limitations

### 2.3 Enhancements

### 2.4 Problem Reports

#### 2.4.1 PR 09084 Enhancement Request for Nam.dll

This release of Nam.dll implements the new vmCloseEx function. This one does what vmClose does. It also returns the name of the vm file it closes. A possible usage of this new function follows.

```
...
vmOpen(...name from the nam argument...);
...
char sVmFileName[260] = "";
vmCloseEx(sVmFileName, 260);
::CreateProcess(...args that make the child process inherit the parent open
handles...);
vmOpen(sVmFileName);
...
vmClose();
```