

RACAL INSTRUMENTS™
1260-17
80-CHANNEL SPDT
MATRIX MODULE

Publication No. 980673-013 Rev. A

Astronics Test Systems Inc.

4 Goodyear, Irvine, CA 92618

Tel: (800) 722-2528, (949) 859-8999; Fax: (949) 859-7139

atsinfo@astronics.com atssales@astronics.com
atshelpdesk@astronics.com <http://www.astronictestsystems.com>

**THANK YOU FOR PURCHASING THIS
ASTRONICS TEST SYSTEMS PRODUCT**

For this product, or any other Astronics Test Systems product that incorporates software drivers, you may access our web site to verify and/or download the latest driver versions. The web address for driver downloads is:

<http://www.astronictestsystems.com/support/downloads>

If you have any questions about software driver downloads or our privacy policy, please contact us at:

atsinfo@astronics.com

WARRANTY STATEMENT

All Astronics Test Systems products are designed to exacting standards and manufactured in full compliance to our AS9100 Quality Management System processes.

This warranty does not apply to defects resulting from any modification(s) of any product or part without Astronics Test Systems express written consent, or misuse of any product or part. The warranty also does not apply to fuses, software, non-rechargeable batteries, damage from battery leakage, or problems arising from normal wear, such as mechanical relay life, or failure to follow instructions.

This warranty is in lieu of all other warranties, expressed or implied, including any implied warranty of merchantability or fitness for a particular use. The remedies provided herein are buyer's sole and exclusive remedies.

For the specific terms of your standard warranty, contact Customer Support. Please have the following information available to facilitate service.

1. Product serial number
2. Product model number
3. Your company and contact information

You may contact Customer Support by:

E-Mail:	atshelpdesk@astronics.com	
Telephone:	+1 800 722 3262	(USA)
Fax:	+1 949 859 7139	(USA)

RETURN OF PRODUCT

Authorization is required from Astronics Test Systems before you send us your product or sub-assembly for service or calibration. Call or contact Customer Support at 1-800-722-3262 or 1-949-859-8999 or via fax at 1-949-859-7139. We can also be reached at: atshelpdesk@astronics.com.

If the original packing material is unavailable, ship the product or sub-assembly in an ESD shielding bag and use appropriate packing materials to surround and protect the product.

PROPRIETARY NOTICE

This document and the technical data herein disclosed, are proprietary to Astronics Test Systems, and shall not, without express written permission of Astronics Test Systems, be used in whole or in part to solicit quotations from a competitive source or used for manufacture by anyone other than Astronics Test Systems. The information herein has been developed at private expense, and may only be used for operation and maintenance reference purposes or for purposes of engineering evaluation and incorporation into technical specifications and other documents which specify procurement of products from Astronics Test Systems.

TRADEMARKS AND SERVICE MARKS

All trademarks and service marks used in this document are the property of their respective owners.

- Racal Instruments, Talon Instruments, Trig-Tek, ActivATE, Adapt-A-Switch, N-GEN, and PAWS are trademarks of Astronics Test Systems in the United States.

DISCLAIMER

Buyer acknowledges and agrees that it is responsible for the operation of the goods purchased and should ensure that they are used properly and in accordance with this document and any other instructions provided by Seller. Astronics Test Systems products are not specifically designed, manufactured or intended to be used as parts, assemblies or components in planning, construction, maintenance or operation of a nuclear facility, or in life support or safety critical applications in which the failure of the Astronics Test Systems product could create a situation where personal injury or death could occur. Should Buyer purchase Astronics Test Systems product for such unintended application, Buyer shall indemnify and hold Astronics Test Systems, its officers, employees, subsidiaries, affiliates and distributors harmless against all claims arising out of a claim for personal injury or death associated with such unintended use.

FOR YOUR SAFETY

Before undertaking any troubleshooting, maintenance or exploratory procedure, read carefully the **WARNINGS** and **CAUTION** notices.



CAUTION
RISK OF ELECTRICAL SHOCK
DO NOT OPEN



This equipment contains voltage hazardous to human life and safety, and is capable of inflicting personal injury.



If this instrument is to be powered from the AC line (mains) through an autotransformer, ensure the common connector is connected to the neutral (earth pole) of the power supply.



Before operating the unit, ensure the conductor (green wire) is connected to the ground (earth) conductor of the power outlet. Do not use a two-conductor extension cord or a three-prong/two-prong adapter. This will defeat the protective feature of the third conductor in the power cord.



Maintenance and calibration procedures sometimes call for operation of the unit with power applied and protective covers removed. Read the procedures and heed warnings to avoid "live" circuit points.

Before operating this instrument:

1. Ensure the proper fuse is in place for the power source to operate.
2. Ensure all other devices connected to or in proximity to this instrument are properly grounded or connected to the protective third-wire earth ground.

If the instrument:

- fails to operate satisfactorily
- shows visible damage
- has been stored under unfavorable conditions
- has sustained stress

Do not operate until performance is checked by qualified personnel.

EC Declaration of Conformity

We

Astronics Test Systems Inc.
4 Goodyear
Irvine, CA 92618

declare under sole responsibility that the

1260-17 80-Channel SPDT Matrix Module, P/N 407165
1260-17A 80-Channel SPDT Module, P/N 407165-001

They conform to the following Product Specifications:

Safety: EN61010-1:1993+A2:1995

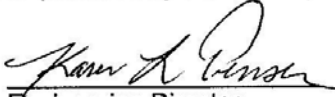
EMC: EN61326:1997+A1:1998

Supplementary Information:

The above specifications are met when the product is installed in an Astronics Test Systems certified mainframe with faceplates installed over all unused slots, as applicable

The product herewith complies with the requirements of the Low Voltage Directive 73/23/EEC and the EMC Directive 89/336/EEC (modified by 93/68/EEC).

Irvine, CA, April 26, 2002


Engineering Director

This page was left intentionally blank.

NOTE FOR SYSTEMS WITH 1260-OPT 01T

The “Module-Specific Syntax” section of this manual shows the command syntax for the 1260-01S Smart Card. If you are using the newer 1260-01T Smart Card, the commands will NOT work as shown.

Consult the 1260-01T Manual for a description of the commands which may be used with the 1260-01T Smart Card.

The channel numbers described in this manual are valid for the 1260-01T. The channel numbers continue to be used for the 1260-01T.

The syntax of the commands which use channel numbers has changed for those cards controlled by the 1260-01T.

The new syntax used to close a channel is:

CLOSE (@ <module address> (<channel>))

For example, with for a relay module whose <module address> is set to 7, closing <channel> 0 is performed with the command:

CLOSE (@ 7 (0))

Using the older 1260-01S, the command would be (as shown in this manual):

CLOSE 7.0

Many other command syntax differences exist. Please consult chapter 2 of the 1260-01T manual for a description of the commands which are available for the 1260-01T.

Control Information for the 1260-17

The following information describes the control-register-to-relay-channel mapping for a 1260-17 Relay Module. This information may be used to control a 1260-17 when using a 1260-01T in the register-based mode of operation.

Each relay on this module is controlled by setting or clearing a single bit within a Control Register. Control Registers on the module operate 8 channels simultaneously. There are eight control bits per Control Register. Setting the bit to a 1 closes the relay; setting the bit to a 0 opens the relay.

The table below shows the mapping from logical channels to control bits. The logical channels are used when operating the relay module in message-based mode. The control bits within the Control Registers are used to operate the module in register-based mode.

Each Control Register is located 2 addresses from the previous Control Register. That is, each Control Register is located at an odd address. This is shown in Table 2-2 of the 1260-01T manual. Control Register 0 is located at the “Base A24 Address” for the module. Consult the “Register-Based Operation” Section of Chapter 2 of the 1260-01T manual for a description of calculating control register addresses.

Channel	Control Register	Control Bit
0	0	0
1	0	1
2	0	2
3	0	3
4	0	4
5	0	5
6	0	6
7	0	7
8	1	0
9	1	1
10	1	2
11	1	3
12	1	4
13	1	5
14	1	6
15	1	7
16	2	0
17	2	1
18	2	2
19	2	3
20	2	4
21	2	5
22	2	6
23	2	7
24	3	0
25	3	1
26	3	2
27	3	3
28	3	4
29	3	5
30	3	6
31	3	7
32	4	0
33	4	1

Channel	Control Register	Control Bit
34	4	2
35	4	3
36	4	4
37	4	5
38	4	6
39	4	7
40	5	0
41	5	1
42	5	2
43	5	3
44	5	4
45	5	5
46	5	6
47	5	7
48	6	0
49	6	1
50	6	2
51	6	3
52	6	4
53	6	5
54	6	6
55	6	7
56	7	0
57	7	1
58	7	2
59	7	3
60	7	4
61	7	5
62	7	6
63	7	7
64	8	0
65	8	1
66	8	2
67	8	3
68	8	4
69	8	5
70	8	6
71	8	7
72	9	0
73	9	1
74	9	2
75	9	3
76	9	4
77	9	5
78	9	6
79	9	7

This page was left intentionally blank.

Table of Contents

Chapter 1	1-1
MODULE SPECIFICATION	1-1
Module Specification	1-1
Specifications	1-2
Chapter 2	2-1
INSTALLATION INSTRUCTIONS	2-1
Unpacking and Inspection	2-1
Option 01 Installation	2-2
Module Installation	2-2
1260-17 ID Byte	2-2
Chapter 3	3-1
MODULE SPECIFIC SYNTAX	3-1
1260-17 Module Specific Syntax	3-1
Syntax	3-1
Chapter 4	4-1
OPTIONAL HARNESS ASSEMBLIES	4-1

List of Figures

Figure 1-1, 1260-17 80 Channel SPDT Switch Module 1-1

Figure 3-1, 1260-17 Block Diagram 3-2

Figure 3-2, 1260-17 Pin Connections, Front View 3-3

DOCUMENT CHANGE HISTORY

Revision	Date	Description of Change
A	01/29/10	Revised per EO 30033 Revised format to current standards. Company name revised throughout manual. Manual now revision letter controlled. Added Document Change History Page iii. Back of cover sheet. Revised Warranty Statement, Return of Product, Proprietary Notice and Disclaimer to current standards. (Chap 2-1) Unpacking and inspection. Revise to current standards. Removed Reshipment Instructions in (Chap. 2-1) and removed (Chap 5). Information. Now appears in first 2 sheets behind cover sheet. Updated table of contents to reflect changes made. .

This page was left intentionally blank.

Chapter 1

MODULE SPECIFICATION

Module Specification

The 1260-17 80-Channel SPDT Switch Module is a high density multipurpose switch card, (Refer to the diagram below). It switches single lines per channel. Each channel is available at the module's front panel as either a normally open (NO) or normally closed (NC) path. A block diagram of the module is shown in **Figure 3-1**.

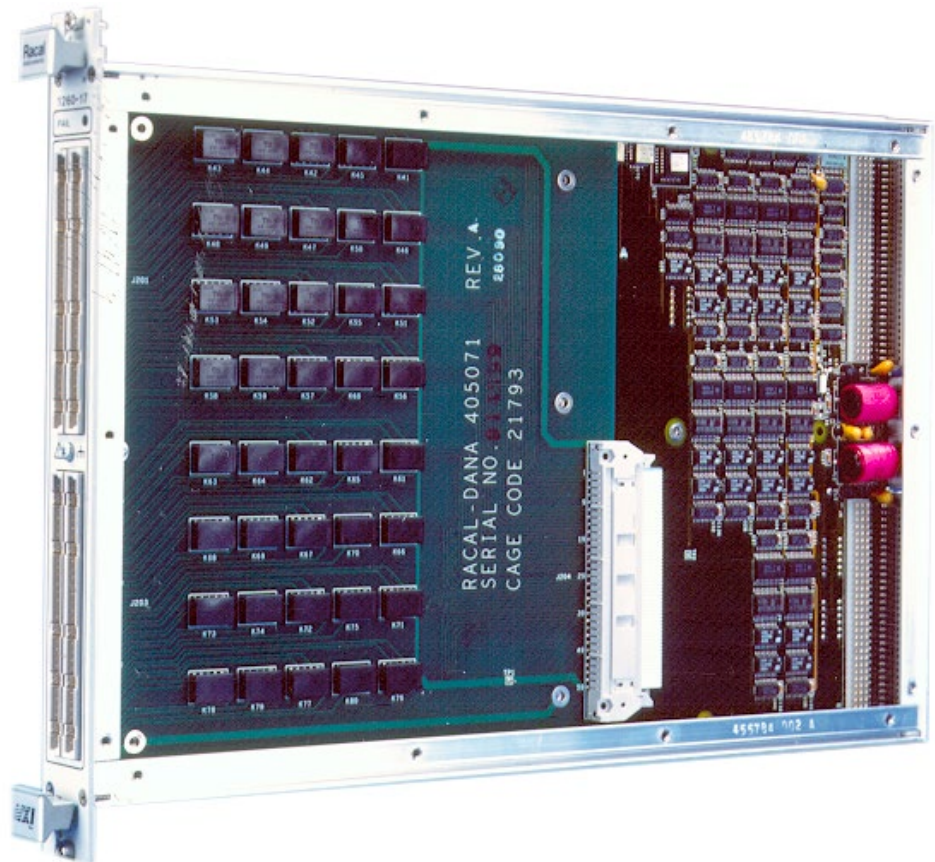


Figure 1-1, 1260-17 80 Channel SPDT Switch Module

Specifications

User Connector 64-Pin (2 Row) IDC Quick Disconnect
User connector is included with the 1260-17. *

Maximum Switchable Voltage
(Terminal-Terminal or Terminal Chassis)
250 VDC, 250 VAC RMS

Maximum Switchable Current

Per Channel 1 ADC, 1 A RMS

Maximum Switchable Power

Per Channel 30 WDC, 62.5 VA AC

Path Resistance < 0.5 Ω

DC Isolation COM-NO > 2 x 10⁹ Ω

Bandwidth, (-3db)
50 termination > 60 MHz

Insertion Loss,
50 Ω termination
< .1 dB to 100 kHz
< .5 dB to 1 MHz
< 1 dB to 10 MHz (typical)

Crosstalk,
50 Ω termination
< -45 dB to 100 kHz
< -40 dB to 1 MHz
< -35 dB to 10 MHz

*A crimp connector kit is also available for this module (P/N 404975-003). A strain relief option can be ordered separately for this crimp connector kit.

Isolation, 50 Ω termination < -30 dB to 10 MHz

Switching Time 2mS

Minimum Option 01 Firmware

Revision 17.1

Chapter 2

INSTALLATION INSTRUCTIONS

Unpacking and Inspection

1. Remove the 1260-17 module and inspect it for damage. If any damage is apparent, inform the carrier immediately. Retain shipping carton and packing material for the carrier's inspection.
2. Verify that the pieces in the package you received contain the correct 1260-17 module option and the 1260-17 Users Manual. Notify Customer Support if the module appears damaged in any way. Do not attempt to install a damaged module into a VXI chassis.
3. The 1260-17 module is shipped in an anti-static bag to prevent electrostatic damage to the module. Do not remove the module from the anti-static bag unless it is in a static-controlled area.

**Option 01
Installation**

Installation of the Option 01 to the 1260-17 is described in the Installation section of the 1260 Series VXI Switching Cards Manual.

**Module
Installation**

Installation of the 1260-17 Switching Module into a VXI mainframe, including the setting of DIP switches, is described in the Installation section of the 1260 Series VXI Switching Cards Manual.

1260-17 ID Byte

The 1260-17 has only one ID byte and it is hard wired inside the module. The ID byte is h17.

Chapter 3

MODULE SPECIFIC SYNTAX

1260-17 Module Specific Syntax

The Module Specific Syntax for the 1260-17 is required in the use of the OPEN and CLOSE commands. It will also appear in data output by the Master in response to the PDATAOUT and PSETUP commands.

Syntax

The Module Specific Syntax for the 1260-17 Signal Multiplexer/Scanner module is as follows:

<module address>.<channel number>

where <module address> is the address.

<channel number> is the reference number of the channel to be closed, value 0 - 79.

NOTE:

The <module address> used here is **NOT** the VXIbus defined logical address of the 1260 Series Master. It is peculiar to the 1260 Series and describes the switching module in relation to the Master. This address corresponds to the binary value of the switch setting of SW1 on the switching module PCB.

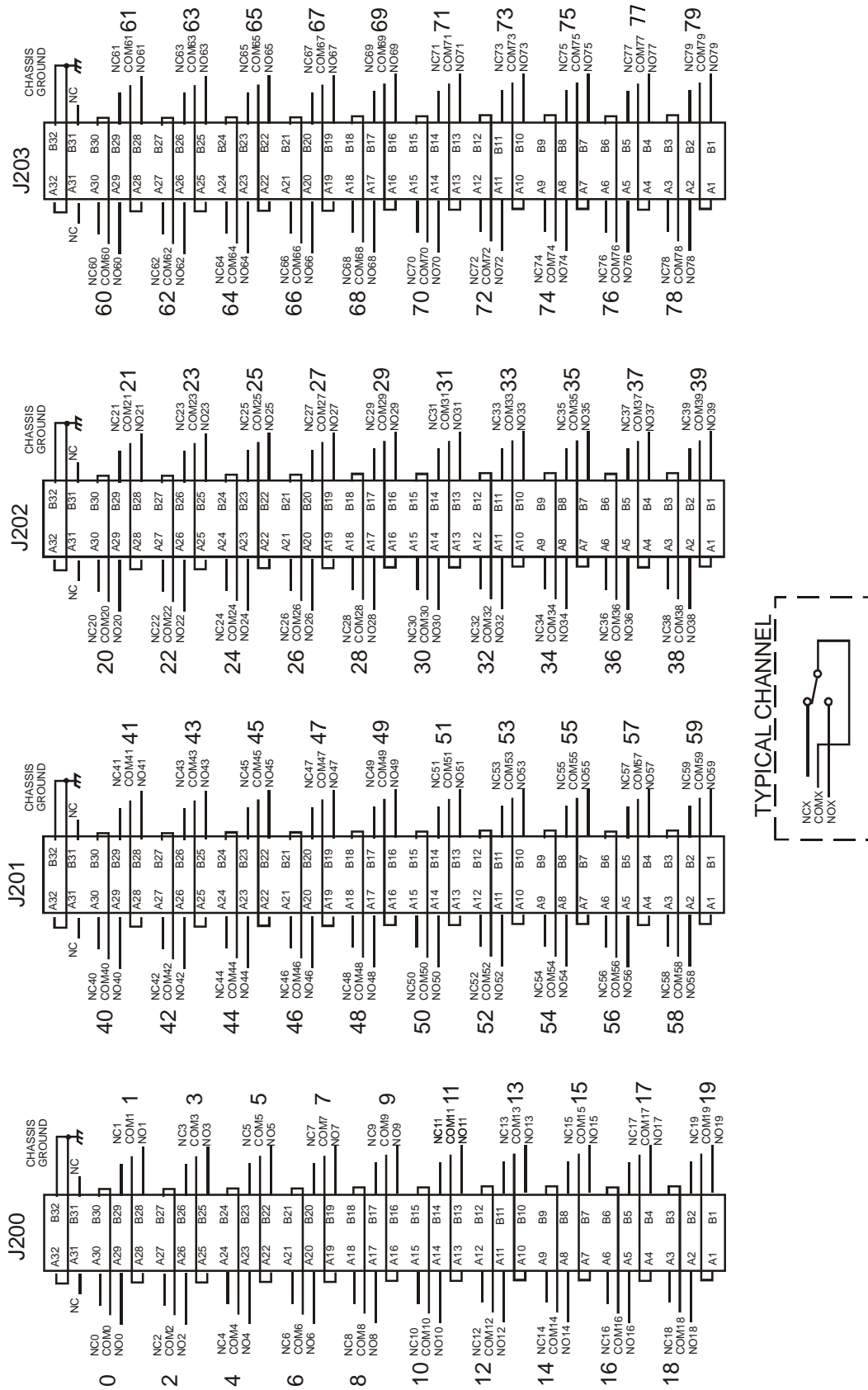


Figure 3-1, 1260-17 Block Diagram

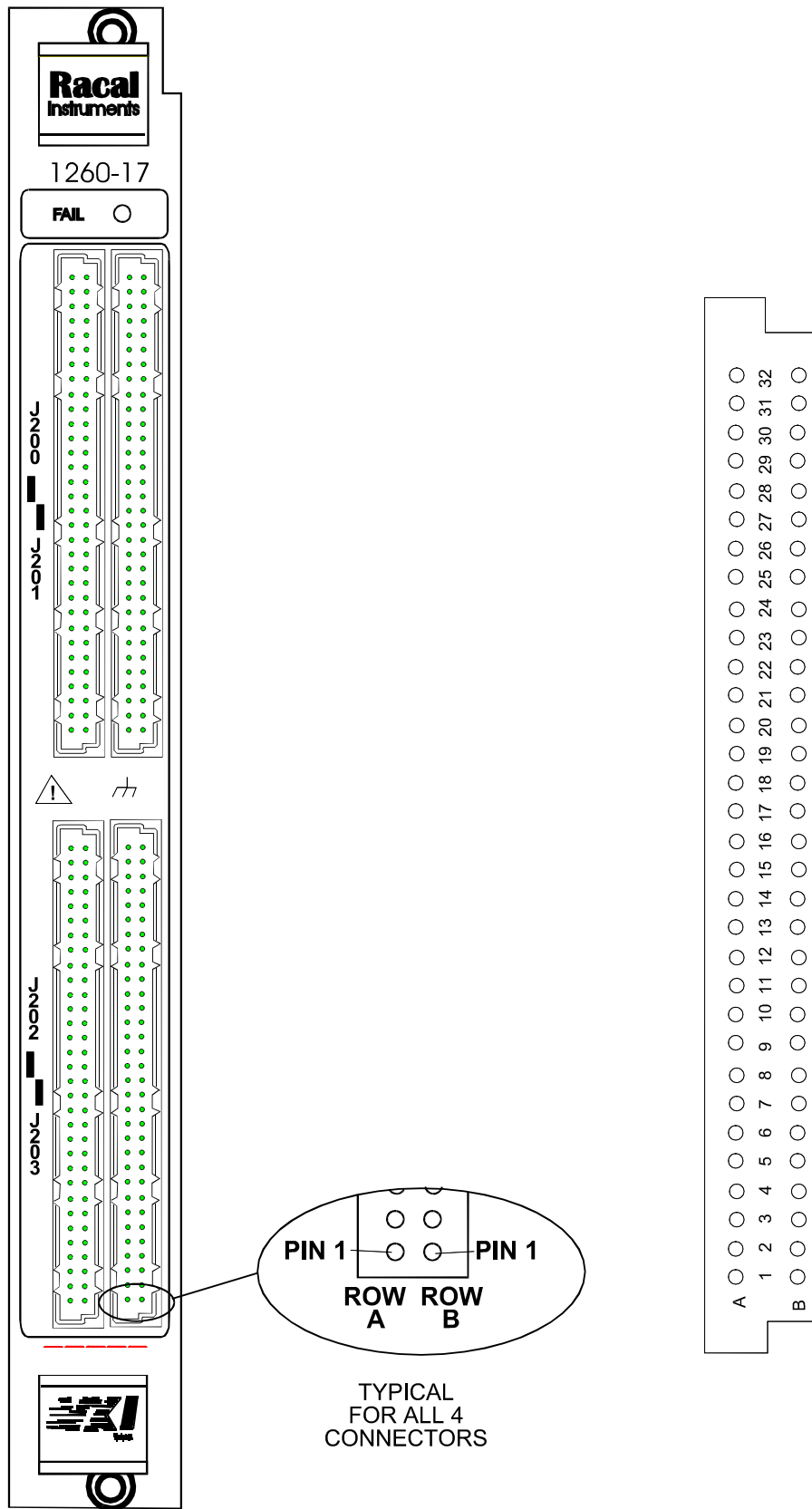


Figure 3-2, 1260-17 Pin Connections, Front View

This page was left intentionally blank.

Chapter 4

OPTIONAL HARNESS ASSEMBLIES

The following harness assemblies are used to connect 1260-17 to Freedom Series Test Receiver Interfaces.

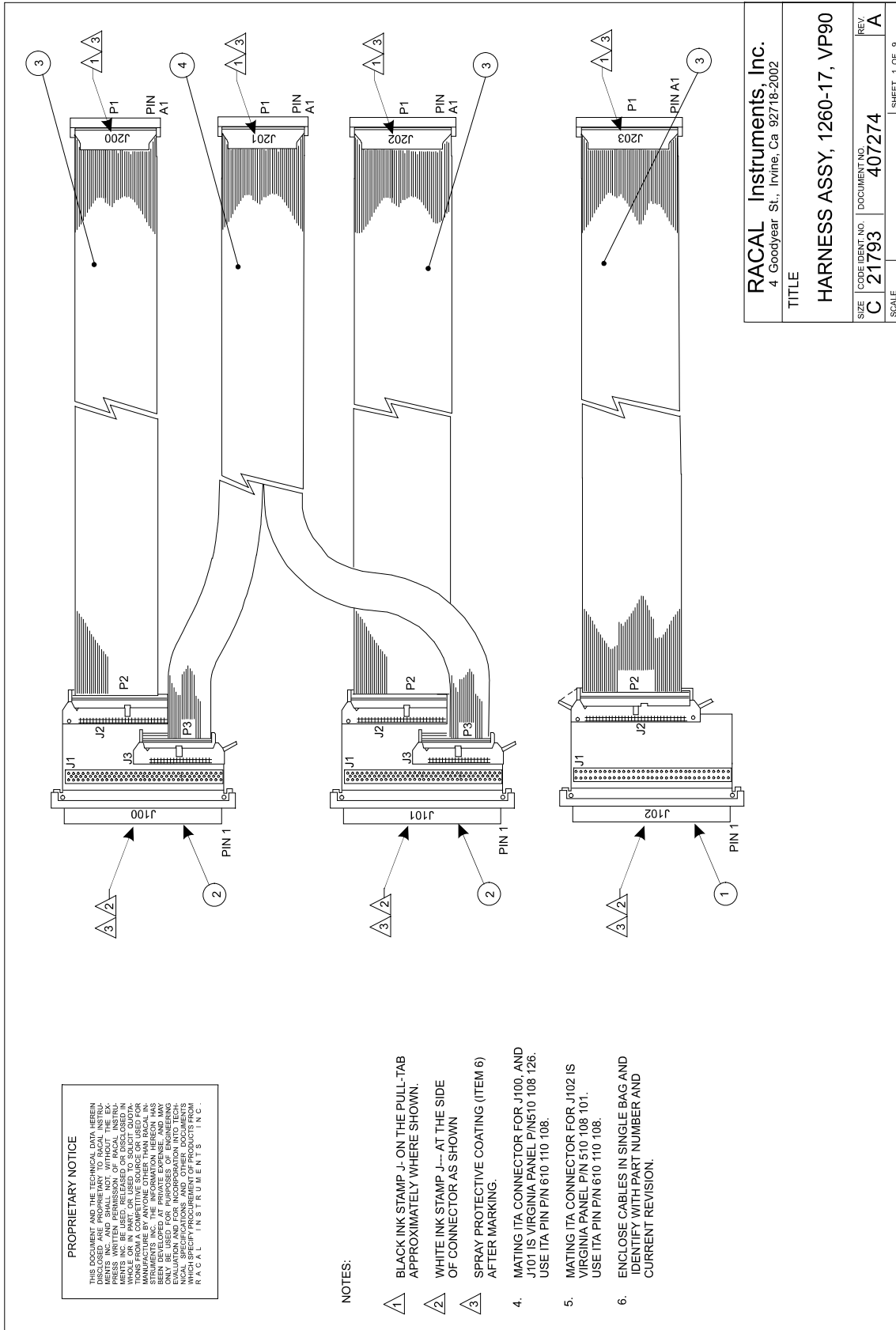
Each harness documentation consists of an assembly drawing, parts list, system wire list and wire list.

407274 – Virginia Panel, Inc. Series VP90 Interface Harness

407275 – TTI Testron, Inc. Interface Harness

For more information on the complete line of Test Receiver Interface solutions, contact the Astronics Test Systems Customer Support Department.

This page was left intentionally blank.



PROPRIETARY NOTICE
 THIS DOCUMENT AND THE TECHNICAL DATA HEREIN DISCLOSED ARE PROPRIETARY TO RACAL INSTRUMENTS, INC. NO PART OF THIS DOCUMENT IS TO BE REPRODUCED, COPIED, TRANSMITTED, OR IN ANY MANNER PUBLISHED, EITHER WHOLE OR IN PART, OR USED TO SOLICIT QUOTES FROM ANY OTHER MANUFACTURING SOURCE OR USER FOR ANY PRODUCT OR SERVICE WITHOUT THE WRITTEN PERMISSION OF RACAL INSTRUMENTS, INC. THE INFORMATION HEREIN HAS BEEN OBTAINED FROM A SOURCE WHICH RACAL INSTRUMENTS, INC. HAS REASONABLE BELIEF THAT IT IS RELIABLE AND ONLY BE USED FOR PURPOSES OF ENGINEERING EVALUATION AND INFORMATION INTO TECHNICAL SPECIFICATIONS AND DRAWINGS OF PRODUCTS WHICH SPECIFY PROCUREMENT OF PRODUCTS FROM RACAL INSTRUMENTS, INC.

NOTES:

- 1 BLACK INK STAMP J- ON THE PULL-TAB APPROXIMATELY WHERE SHOWN.
- 2 WHITE INK STAMP J--- AT THE SIDE OF CONNECTOR AS SHOWN
- 3 SPRAY PROTECTIVE COATING (ITEM 6) AFTER MARKING.
- 4 MATING ITA CONNECTOR FOR J100, AND J101 IS VIRGINIA PANEL P/N 510 108 126. USE ITA P/N P/N 610 110 108.
- 5 MATING ITA CONNECTOR FOR J102 IS VIRGINIA PANEL P/N 510 108 101. USE ITA P/N P/N 610 110 108.
- 6 ENCLOSE CABLES IN SINGLE BAG AND IDENTIFY WITH PART NUMBER AND CURRENT REVISION.

ENGINEERING PARTS LIST

ITEM	BIN	PART NO.	DESCRIPTION	QTY	REFERENCE
1		405084	PCB ASSY, VP90 INTFC 64-PIN	1	J102
2		405085	PCB ASSY, VP90 INTFC, 96-PIN	2	J100,J101
3		407259	CABLE ASSY, 'DC, 64-COND, VP90	3	
4		407258	CABLE ASSY, 64SPLT, VP90	1	
5		910541	POLYURETHANE CONF. COAT	AIR	

DOCUMENT TITLE	SIZE	CODE NO.	DOCUMENT NO.	REV
HARNESS ASSEMBLY,1260-17,VP90	A	21793	407274	A
	DRN			SHEET 2 of 9

ENGINEERING WIRE LIST

WIRE	FROM	TO	TYPE	PART	WIRE LEN	REFERENCE
	BLK AA (J100)	Uxx-SLOT yy (J200,J201)	CABLE	407274		SYSTEM WIRE LIST
	BLK AA (J101)	Uxx-SLOT yy (J201,J202)	CABLE	407274		
	BLK AA (J102)	Uxx-SLOT yy (J203)	CABLE	407274		

This system wirelist serves as a template for incorporating this harness assembly into the overall system wirelist. It does not in any way affect the fabrication of this harness assembly.

DOCUMENT TITLE	SIZE	CODE NO.	DOCUMENT NO.	REV
HARNESS ASSEMBLY,1260-17,VP90	A	21793	407274	A
	DRN			SHEET 3 of 9

ENGINEERING WIRE LIST

WIRE	FROM	TO	TYPE	PART	WIRE LEN	REFERENCE
1	J100-44	J200-A1	RED	407259	41.5"	COMM 19
2	J100-76	J200-A2	BRN	407259	41.5"	NO 18
3	J100-13	J200-A3	BLK	407259	41.5"	NC 18
4	J100-46	J200-A4	WHT	407259	41.5"	COMM 17
5	J100-78	J200-A5	GRY	407259	41.5"	NO 16
6	J100-15	J200-A6	VIO	407259	41.5"	NC 16
7	J100-48	J200-A7	BLU	407259	41.5"	COMM 15
8	J100-80	J200-A8	GRN	407259	41.5"	NO 14
9	J100-17	J200-A9	YEL	407259	41.5"	NC 14
10	J100-50	J200-A10	ORN	407259	41.5"	COMM 13
11	J100-82	J200-A11	RED	407259	41.5"	NO 12
12	J100-19	J200-A12	BRN	407259	41.5"	NC 12
13	J100-52	J200-A13	BLK	407259	41.5"	COMM 11
14	J100-84	J200-A14	WHT	407259	41.5"	NO 10
15	J100-21	J200-A15	GRY	407259	41.5"	NC 10
16	J100-54	J200-A16	VIO	407259	41.5"	COMM 09
17	J100-86	J200-A17	BLU	407259	41.5"	NO 08
18	J100-23	J200-A18	GRN	407259	41.5"	NC 08
19	J100-56	J200-A19	YEL	407259	41.5"	COMM 07
20	J100-88	J200-A20	ORN	407259	41.5"	NO 06
21	J100-25	J200-A21	RED	407259	41.5"	NC 06
22	J100-58	J200-A22	BRN	407259	41.5"	COMM 05
23	J100-90	J200-A23	BLK	407259	41.5"	NO 04
24	J100-27	J200-A24	WHT	407259	41.5"	NC 04
25	J100-60	J200-A25	GRY	407259	41.5"	COMM 03
26	J100-92	J200-A26	VIO	407259	41.5"	NO 02
27	J100-29	J200-A27	BLU	407259	41.5"	NC 02
28	J100-62	J200-A28	GRN	407259	41.5"	COMM 01
29	J100-94	J200-A29	YEL	407259	41.5"	NO 00
30	J100-31	J200-A30	ORN	407259	41.5"	NC 00
31	J100-64	J200-A31	RED	407259	41.5"	NC
32	J100-96	J200-A32	BRN	407259	41.5"	GND
33	J100-75	J200-B1	TAN	407259	41.5"	NO 19
34	J100-12	J200-B2	TAN	407259	41.5"	NC 19
35	J100-45	J200-B3	TAN	407259	41.5"	COMM 18
36	J100-77	J200-B4	TAN	407259	41.5"	NO 17
37	J100-14	J200-B5	TAN	407259	41.5"	NC 17
38	J100-47	J200-B6	TAN	407259	41.5"	COMM 16
39	J100-79	J200-B7	TAN	407259	41.5"	NO 15
40	J100-16	J200-B8	TAN	407259	41.5"	NC 15
41	J100-49	J200-B9	TAN	407259	41.5"	COMM 14
42	J100-81	J200-B10	TAN	407259	41.5"	NO 13
43	J100-18	J200-B11	TAN	407259	41.5"	NC 13
44	J100-51	J200-B12	TAN	407259	41.5"	COMM 12
45	J100-83	J200-B13	TAN	407259	41.5"	NO 11
46	J100-20	J200-B14	TAN	407259	41.5"	NC 11
47	J100-53	J200-B15	TAN	407259	41.5"	COMM 10
48	J100-85	J200-B16	TAN	407259	41.5"	NO 09

DOCUMENT TITLE	SIZE	CODE NO.	DOCUMENT NO.	REV
HARNESS ASSEMBLY,1260-17,VP90	A	21793	407274	A
	DRN			SHEET 4 of 9

ENGINEERING WIRE LIST

WIRE	FROM	TO	TYPE	PART	WIRE LEN	REFERENCE
49	J100-22	J200-B17	TAN	407259	41.5"	NC 09
50	J100-55	J200-B18	TAN	407259	41.5"	COMM 08
51	J100-87	J200-B19	TAN	407259	41.5"	NO 07
52	J100-24	J200-B20	TAN	407259	41.5"	NC 07
53	J100-57	J200-B21	TAN	407259	41.5"	COMM 06
54	J100-89	J200-B22	TAN	407259	41.5"	NO 05
55	J100-26	J200-B23	TAN	407259	41.5"	NC 05
56	J100-59	J200-B24	TAN	407259	41.5"	COMM 04
57	J100-91	J200-B25	TAN	407259	41.5"	NO 03
58	J100-28	J200-B26	TAN	407259	41.5"	NC 03
59	J100-61	J200-B27	TAN	407259	41.5"	COMM 02
60	J100-93	J200-B28	TAN	407259	41.5"	NO 01
61	J100-30	J200-B29	TAN	407259	41.5"	NC 01
62	J100-63	J200-B30	TAN	407259	41.5"	COMM 00
63	J100-95	J200-B31	TAN	407259	41.5"	NC
64	J100-32	J200-B32	TAN	407259	41.5"	GND
65	J101-1	J201-A1	RED	407258	41.5"	COMM 59
66	J101-34	J201-A2	BRN	407258	41.5"	NO 58
67	J101-66	J201-A3	BLK	407258	41.5"	NC 58
68	J101-3	J201-A4	WHT	407258	41.5"	COMM 57
69	J101-36	J201-A5	GRY	407258	41.5"	NO 56
70	J101-68	J201-A6	VIO	407258	41.5"	NC 56
71	J101-5	J201-A7	BLU	407258	41.5"	COMM 55
72	J101-38	J201-A8	GRN	407258	41.5"	NO 54
73	J101-70	J201-A9	YEL	407258	41.5"	NC 54
74	J101-7	J201-A10	ORN	407258	41.5"	COMM 53
75	J101-40	J201-A11	RED	407258	41.5"	NO 52
76	J101-72	J201-A12	BRN	407258	41.5"	NC 52
77	J101-9	J201-A13	BLK	407258	41.5"	COMM 51
78	J101-42	J201-A14	WHT	407258	41.5"	NO 50
79	J101-74	J201-A15	GRY	407258	41.5"	NC 50
80	J101-11	J201-A16	VIO	407258	41.5"	COMM 49
81	J100-1	J201-A17	BLU	407258	41.5"	NO 48
82	J100-34	J201-A18	GRN	407258	41.5"	NC 48
83	J100-66	J201-A19	YEL	407258	41.5"	COMM 47
84	J100-3	J201-A20	ORN	407258	41.5"	NO 46
85	J100-36	J201-A21	RED	407258	41.5"	NC 46
86	J100-68	J201-A22	BRN	407258	41.5"	COMM 45
87	J100-5	J201-A23	BLK	407258	41.5"	NO 44
88	J100-38	J201-A24	WHT	407258	41.5"	NC 44
89	J100-70	J201-A25	GRY	407258	41.5"	COMM 43
90	J100-7	J201-A26	VIO	407258	41.5"	NO 42
91	J100-40	J201-A27	BLU	407258	41.5"	NC 42
92	J100-72	J201-A28	GRN	407258	41.5"	COMM 41
93	J100-9	J201-A29	YEL	407258	41.5"	NO 40
94	J100-42	J201-A30	ORN	407258	41.5"	NC 40
DOCUMENT TITLE			SIZE	CODE NO.	DOCUMENT NO.	REV
HARNESS ASSEMBLY,1260-17,VP90			A	21793	407274	A
			DRN			SHEET 5 of 9

ENGINEERING WIRE LIST

WIRE	FROM	TO	TYPE	PART #	WIRE LEN	REFERENCE
95	J100-74	J201-A31	RED	407258	41.5"	NC
96	J100-11	J201-A32	BRN	407258	41.5"	GND
97	J101-33	J201-B1	TAN	407258	41.5"	NO 59
98	J101-65	J201-B2	TAN	407258	41.5"	NC 59
99	J101-2	J201-B3	TAN	407258	41.5"	COMM 58
100	J101-35	J201-B4	TAN	407258	41.5"	NO 57
101	J101-67	J201-B5	TAN	407258	41.5"	NC 57
102	J101-4	J201-B6	TAN	407258	41.5"	COMM 56
103	J101-37	J201-B7	TAN	407258	41.5"	NO 55
104	J101-69	J201-B8	TAN	407258	41.5"	NC 55
105	J101-6	J201-B9	TAN	407258	41.5"	COMM 54
106	J101-39	J201-B10	TAN	407258	41.5"	NO 53
107	J101-71	J201-B11	TAN	407258	41.5"	NC 53
108	J101-8	J201-B12	TAN	407258	41.5"	COMM 52
109	J101-41	J201-B13	TAN	407258	41.5"	NO 51
110	J101-73	J201-B14	TAN	407258	41.5"	NC 51
111	J101-10	J201-B15	TAN	407258	41.5"	COMM 50
112	J101-43	J201-B16	TAN	407258	41.5"	NO 49
113	J100-33	J201-B17	TAN	407258	41.5"	NC 49
114	J100-65	J201-B18	TAN	407258	41.5"	COMM 48
115	J100-2	J201-B19	TAN	407258	41.5"	NO 47
116	J100-35	J201-B20	TAN	407258	41.5"	NC 47
117	J100-67	J201-B21	TAN	407258	41.5"	COMM 46
118	J100-4	J201-B22	TAN	407258	41.5"	NO 45
119	J100-37	J201-B23	TAN	407258	41.5"	NC 45
120	J100-69	J201-B24	TAN	407258	41.5"	COMM 44
121	J100-6	J201-B25	TAN	407258	41.5"	NO 43
122	J100-39	J201-B26	TAN	407258	41.5"	NC 43
123	J100-71	J201-B27	TAN	407258	41.5"	COMM 42
124	J100-8	J201-B28	TAN	407258	41.5"	NO 41
125	J100-41	J201-B29	TAN	407258	41.5"	NC 41
126	J100-73	J201-B30	TAN	407258	41.5"	COMM 40
127	J100-10	J201-B31	TAN	407258	41.5"	NC
128	J100-43	J201-B32	TAN	407258	41.5"	GND
129	J101-44	J202-A1	RED	407259	41.5"	COMM 39
130	J101-76	J202-A2	BRN	407259	41.5"	NO 38
131	J101-13	J202-A3	BLK	407259	41.5"	NC 38
132	J101-46	J202-A4	WHT	407259	41.5"	COMM 37
133	J101-78	J202-A5	GRY	407259	41.5"	NO 36
134	J101-15	J202-A6	VIO	407259	41.5"	NC 36
135	J101-48	J202-A7	BLU	407259	41.5"	COMM 35
136	J101-80	J202-A8	GRN	407259	41.5"	NO 34
137	J101-17	J202-A9	YEL	407259	41.5"	NC 34
138	J101-50	J202-A10	ORN	407259	41.5"	COMM 33
139	J101-82	J202-A11	RED	407259	41.5"	NO 32
140	J101-19	J202-A12	BRN	407259	41.5"	NC 32
DOCUMENT TITLE			SIZE	CODE NO.	DOCUMENT NO.	REV
HARNESS ASSEMBLY,1260-17,VP90			A	21793	407274	A
			DRN			SHEET 6 of 9

ENGINEERING WIRE LIST

WIRE	FROM	TO	TYPE	PART #	WIRE LEN	REFERENCE
141	J101-52	J202-A13	BLK	407259	41.5"	COMM 31
142	J101-84	J202-A14	WHT	407259	41.5"	NO 30
143	J101-21	J202-A15	GRY	407259	41.5"	NC 30
144	J101-54	J202-A16	VIO	407259	41.5"	COMM 29
145	J101-86	J202-A17	BLU	407259	41.5"	NO 28
146	J101-23	J202-A18	GRN	407259	41.5"	NC 28
147	J101-56	J202-A19	YEL	407259	41.5"	COMM 27
148	J101-88	J202-A20	ORN	407259	41.5"	NO 26
149	J101-25	J202-A21	RED	407259	41.5"	NC 26
150	J101-58	J202-A22	BRN	407259	41.5"	COMM 25
151	J101-90	J202-A23	BLK	407259	41.5"	NO 24
152	J101-27	J202-A24	WHT	407259	41.5"	NC 24
153	J101-60	J202-A25	GRY	407259	41.5"	COMM 23
154	J101-92	J202-A26	VIO	407259	41.5"	NO 22
155	J101-29	J202-A27	BLU	407259	41.5"	NC 22
156	J101-62	J202-A28	GRN	407259	41.5"	COMM 21
157	J101-94	J202-A29	YEL	407259	41.5"	NO 20
158	J101-31	J202-A30	ORN	407259	41.5"	NC 20
159	J101-64	J202-A31	RED	407259	41.5"	NC
160	J101-96	J202-A32	BRN	407259	41.5"	GND
161	J101-75	J202-B1	TAN	407259	41.5"	NO 39
162	J101-12	J202-B2	TAN	407259	41.5"	NC 39
163	J101-45	J202-B3	TAN	407259	41.5"	COMM 38
164	J101-77	J202-B4	TAN	407259	41.5"	NO 37
165	J101-14	J202-B5	TAN	407259	41.5"	NC 37
166	J101-47	J202-B6	TAN	407259	41.5"	COMM 36
167	J101-79	J202-B7	TAN	407259	41.5"	NO 35
168	J101-16	J202-B8	TAN	407259	41.5"	NC 35
169	J101-49	J202-B9	TAN	407259	41.5"	COMM 34
170	J101-81	J202-B10	TAN	407259	41.5"	NO 33
171	J101-18	J202-B11	TAN	407259	41.5"	NC 33
172	J101-51	J202-B12	TAN	407259	41.5"	COMM 32
173	J101-83	J202-B13	TAN	407259	41.5"	NO 31
174	J101-20	J202-B14	TAN	407259	41.5"	NC 31
175	J101-53	J202-B15	TAN	407259	41.5"	COMM 30
176	J101-85	J202-B16	TAN	407259	41.5"	NO 29
177	J101-22	J202-B17	TAN	407259	41.5"	NC 29
178	J101-55	J202-B18	TAN	407259	41.5"	COMM 28
179	J101-87	J202-B19	TAN	407259	41.5"	NO 27
180	J101-24	J202-B20	TAN	407259	41.5"	NC 27
181	J101-57	J202-B21	TAN	407259	41.5"	COMM 26
182	J101-89	J202-B22	TAN	407259	41.5"	NO 25
183	J101-26	J202-B23	TAN	407259	41.5"	NC 25
184	J101-59	J202-B24	TAN	407259	41.5"	COMM 24
185	J101-91	J202-B25	TAN	407259	41.5"	NO 23
186	J101-28	J202-B26	TAN	407259	41.5"	NC 23
187	J101-61	J202-B27	TAN	407259	41.5"	COMM 22
188	J101-93	J202-B28	TAN	407259	41.5"	NO 21
DOCUMENT TITLE			SIZE	CODE NO.	DOCUMENT NO.	REV
HARNESS ASSEMBLY,1260-17,VP90			A	21793	407274	A
			DRN			SHEET 7 of 9

ENGINEERING WIRE LIST

WIRE	FROM	TO	TYPE	PART #	WIRE LEN	REFERENCE
189	J101-30	J202-B29	TAN	407259	41.5"	NC 21
190	J101-63	J202-B30	TAN	407259	41.5"	COMM 20
191	J101-95	J202-B31	TAN	407259	41.5"	NC
192	J101-32	J202-B32	TAN	407259	41.5"	GND
193	J102-33	J203-A1	RED	407259	41.5"	COMM 79
194	J102-34	J203-A2	BRN	407259	41.5"	NO 78
195	J102-35	J203-A3	BLK	407259	41.5"	NC 78
196	J102-36	J203-A4	WHT	407259	41.5"	COMM 77
197	J102-37	J203-A5	GRY	407259	41.5"	NO 76
198	J102-38	J203-A6	VIO	407259	41.5"	NC 76
199	J102-39	J203-A7	BLU	407259	41.5"	COMM 75
200	J102-40	J203-A8	GRN	407259	41.5"	NO 74
201	J102-41	J203-A9	YEL	407259	41.5"	NC 74
202	J102-42	J203-A10	ORN	407259	41.5"	COMM 73
203	J102-43	J203-A11	RED	407259	41.5"	NO 72
204	J102-44	J203-A12	BRN	407259	41.5"	NC 72
205	J102-45	J203-A13	BLK	407259	41.5"	COMM 71
206	J102-46	J203-A14	WHT	407259	41.5"	NO 70
207	J102-47	J203-A15	GRY	407259	41.5"	NC70
208	J102-48	J203-A16	VIO	407259	41.5"	COMM 69
209	J102-49	J203-A17	BLU	407259	41.5"	NO 68
210	J102-50	J203-A18	GRN	407259	41.5"	NC 68
211	J102-51	J203-A19	YEL	407259	41.5"	COMM 67
212	J102-52	J203-A20	ORN	407259	41.5"	NO 66
213	J102-53	J203-A21	RED	407259	41.5"	NC 66
214	J102-54	J203-A22	BRN	407259	41.5"	COMM 65
215	J102-55	J203-A23	BLK	407259	41.5"	NO 64
216	J102-56	J203-A24	WHT	407259	41.5"	NC 64
217	J102-57	J203-A25	GRY	407259	41.5"	COMM 63
218	J102-58	J203-A26	VIO	407259	41.5"	NO 62
219	J102-59	J203-A27	BLU	407259	41.5"	NC 62
220	J102-60	J203-A28	GRN	407259	41.5"	COMM 61
221	J102-61	J203-A29	YEL	407259	41.5"	NO 60
222	J102-62	J203-A30	ORN	407259	41.5"	NC 60
223	J102-63	J203-A31	RED	407259	41.5"	NC
224	J102-64	J203-A32	BRN	407259	41.5"	GND
225	J102-1	J203-B1	TAN	407259	41.5"	NO 79
226	J102-2	J203-B2	TAN	407259	41.5"	NC 79
227	J102-3	J203-B3	TAN	407259	41.5"	COMM 78
228	J102-4	J203-B4	TAN	407259	41.5"	NO 77
229	J102-5	J203-B5	TAN	407259	41.5"	NC 77
230	J102-6	J203-B6	TAN	407259	41.5"	COMM 76
231	J102-7	J203-B7	TAN	407259	41.5"	NO 75
232	J102-8	J203-B8	TAN	407259	41.5"	NC 75
233	J102-9	J203-B9	TAN	407259	41.5"	COMM 74
234	J102-10	J203-B10	TAN	407259	41.5"	NO 73

DOCUMENT TITLE	SIZE	CODE NO.	DOCUMENT NO.	REV
HARNES ASSEMBLY,1260-17,VP90	A	21793	407274	A
	DRN		SHEET 8 of 9	

ENGINEERING WIRE LIST

WIRE	FROM	TO	TYPE	PART #	WIRE LEN	REFERENCE
235	J102-11	J203-B11	TAN	407259	41.5"	NC 73
236	J102-12	J203-B12	TAN	407259	41.5"	COMM 72
237	J102-13	J203-B13	TAN	407259	41.5"	NO 71
238	J102-14	J203-B14	TAN	407259	41.5"	NC 71
239	J102-15	J203-B15	TAN	407259	41.5"	COMM 70
240	J102-16	J203-B16	TAN	407259	41.5"	NO 69
241	J102-17	J203-B17	TAN	407259	41.5"	NC 69
242	J102-18	J203-B18	TAN	407259	41.5"	COMM 68
243	J102-19	J203-B19	TAN	407259	41.5"	NO 67
244	J102-20	J203-B20	TAN	407259	41.5"	NC 67
245	J102-21	J203-B21	TAN	407259	41.5"	COMM 66
246	J102-22	J203-B22	TAN	407259	41.5"	NO 65
247	J102-23	J203-B23	TAN	407259	41.5"	NC 65
248	J102-24	J203-B24	TAN	407259	41.5"	COMM 64
249	J102-25	J203-B25	TAN	407259	41.5"	NO 63
250	J102-26	J203-B26	TAN	407259	41.5"	NC 63
251	J102-27	J203-B27	TAN	407259	41.5"	COMM 62
252	J102-28	J203-B28	TAN	407259	41.5"	NO 61
253	J102-29	J203-B29	TAN	407259	41.5"	NC 61
254	J102-30	J203-B30	TAN	407259	41.5"	COMM 60
255	J102-31	J203-B31	TAN	407259	41.5"	NC
256	J102-32	J203-B32	TAN	407259	41.5"	GND

DOCUMENT TITLE	SIZE	CODE NO.	DOCUMENT NO.	REV
HARNESS ASSEMBLY,1260-17,VP90	A	21793	407274	A
	DRN			SHEET 9 of 9

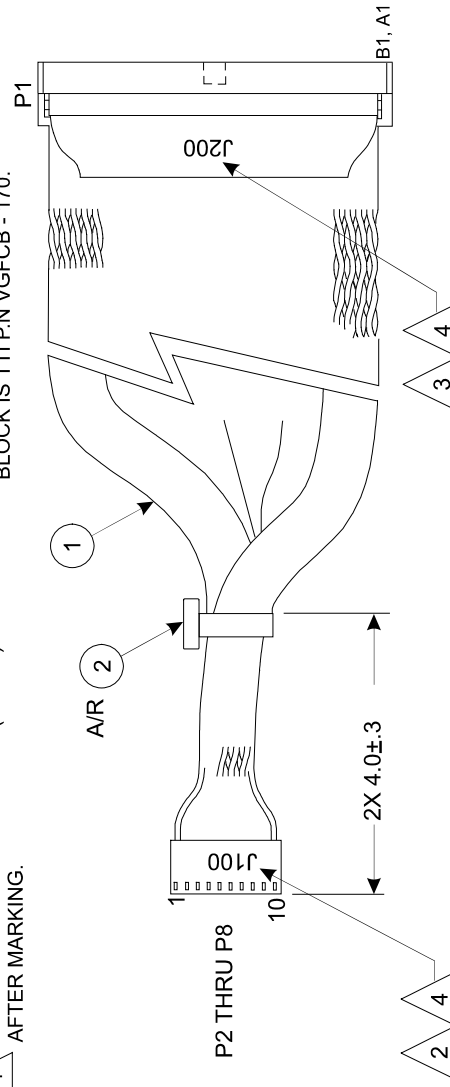
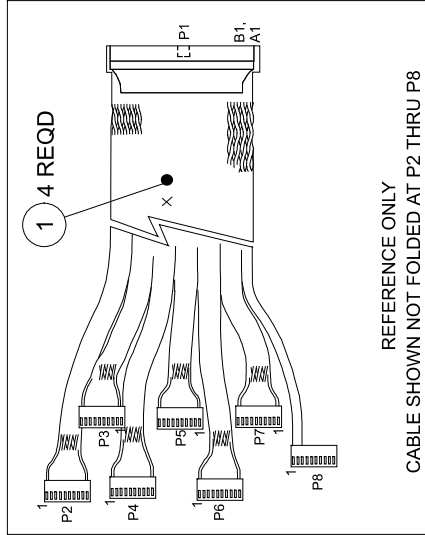
PROPRIETARY NOTICE
 THIS DOCUMENT AND THE TECHNICAL DATA HEREIN ARE THE PROPERTY OF RACAL INSTRUMENTS INC. AND SHALL NOT, WITHOUT THE EXPRESS WRITTEN PERMISSION OF RACAL INSTRUMENTS INC. BE USED, REPRODUCED, COPIED, OR TRANSMITTED IN ANY FORM OR BY ANY MEANS, ELECTRONIC OR MECHANICAL, INCLUDING PHOTOCOPYING, RECORDING, OR BY ANY INFORMATION STORAGE AND RETRIEVAL SYSTEM. ANYONE OTHER THAN RACAL INSTRUMENTS INC. WHOSE NAME IS ON THIS DOCUMENT OR WHOSE MANUFACTURE BY ANYONE OTHER THAN RACAL INSTRUMENTS INC. IS SHOWN ON THIS DOCUMENT HAS BEEN DEVELOPED AT PRIVATE EXPENSE AND MAY BE SUBJECT TO PATENT PROTECTION. RACAL INSTRUMENTS INC. MAKES NO WARRANTY, REPRESENTATION, EVALUATION AND FOR INCORPORATION INTO TECHNICAL SPECIFICATIONS OF PRODUCTS FROM RACAL INSTRUMENTS INC.

CONNECTOR MARKING TABULATION

CONNECTOR	CABLE #1	CABLE #2	CABLE #3	CABLE #4
(P1)	J200	J201	J202	J203
(P2)	J100	J107	J114	J121
(P3)	J101	J108	J115	J122
(P4)	J102	J109	J116	J123
(P5)	J103	J110	J117	J124
(P6)	J104	J111	J118	J125
(P7)	J105	J112	J119	J126
(P8)	J106	J113	J120	J127

NOTES:

- CONNECTOR P2 THRU P7 TO BE FOLDED SO THAT PIN #1 IS AT ONE SIDE OF CABLE ONLY.
- WHITE INK STAMP J--- PER TABULATION AT P2 THRU P7 APPROXIMATELY WHERE SHOWN.
- BLACK INK STAMP J- PER TABULATION AT P1 APPROXIMATELY WHERE SHOWN.
- SPRAY PROTECTIVE COATING (ITEM 4) AFTER MARKING.
- BUILD EACH CABLE ASSY SEPARATELY (4 TOTAL)
- ENCLOSE CABLES IN SINGLE BAG AND IDENTIFY WITH PART NUMBER AND CURRENT REVISION.
- CONNECTOR J100-121 WILL LATER CONNECT TO RECEIVER BLOCK, TTI P/N VGRCB-170H-R. MATING ITA CONNECTOR BLOCK IS TTI P.N VGFGB - 170.



RACAL Instruments, Inc.
 4 Goodyear St., Irvine, Ca 92718-2002

TITLE
HARNESS ASSY, 1260-17, TTI

SIZE	CODE IDENT NO.	DOCUMENT NO.	REV.
B	21793	407275	A
SCALE			SHEET 1 OF 11

ENGINEERING PARTS LIST

ITEM	BIN	PART NO.	DESCRIPTION	QTY	REFERENCE
1		407260	CABLE ASSY, IDC, 64-COND TTI	4	
2		610777	TIE-CA-LKG-.062-.075	A/R	
3		910541	POLYURETHANE CONFORMAL COAT	A/R	

DOCUMENT TITLE	SIZE	CODE. NO.	DOCUMENT NO.	REV
HARNESS ASSEMBLY, 1260-17, TTI	A	21793	407275	A
	DRN			SHEET 2 of 11

ENGINEERING WIRE LIST

WIRE	FROM	TO	TYPE	PART	WIRE LEN	REFERENCE
	BLK AAx RW 01 (J100)	Uxx-SLOT yy (J200)	CABLE	407275		SYSTEM WIRE LIST
	BLK AAx RW 02 (J101)	Uxx-SLOT yy (J200)	CABLE	407275		
	BLK AAx RW 03 (J102)	Uxx-SLOT yy (J200)	CABLE	407275		
	BLK AAx RW 04 (J103)	Uxx-SLOT yy (J200)	CABLE	407275		
	BLK AAx RW 05 (J104)	Uxx-SLOT yy (J200)	CABLE	407275		
	BLK AAx RW 06 (J105)	Uxx-SLOT yy (J200)	CABLE	407275		
	BLK AAx RW 07 (J106)	Uxx-SLOT yy (J200)	CABLE	407275		
	BLK AAx RW 08 (J107)	Uxx-SLOT yy (J201)	CABLE	407275		
	BLK AAx RW 09 (J108)	Uxx-SLOT yy (J201)	CABLE	407275		
	BLK AAx RW 10 (J109)	Uxx-SLOT yy (J201)	CABLE	407275		
	BLK AAx RW 11 (J110)	Uxx-SLOT yy (J201)	CABLE	407275		
	BLK AAx RW 12 (J111)	Uxx-SLOT yy (J201)	CABLE	407275		
	BLK AAx RW 13 (J112)	Uxx-SLOT yy (J201)	CABLE	407275		
	BLKAAx RW 14 (J113)	Uxx-SLOTyy (J201)	CABLE	407275		
	BLK Aax RW 15 (J114)	Uxx-SLOT yy (J202)	CABLE	407275		
	BLK AAx RW 16 (J115)	Uxx-SLOT yy (J202)	CABLE	407275		
	BLK AAx RW 17 (J116)	Uxx-SLOT yy (J202)	CABLE	407275		
	BLK AAx RW 01 (J117)	Uxx-SLOT yy (J202)	CABLE	407275		
	BLK AAx RW 02 (J118)	Uxx-SLOT yy (J202)	CABLE	407275		
	BLK AAx RW 03 (J119)	Uxx-SLOT yy (J202)	CABLE	407275		
	BLK AAx RW 04 (J120)	Uxx-SLOT yy (J202)	CABLE	407275		
	BLK AAx RW 05 (J121)	Uxx-SLOT yy (J203)	CABLE	407275		
	BLK AAx RW 06 (J122)	Uxx-SLOT yy (J203)	CABLE	407275		
	BLK AAx RW 07 (J123)	Uxx-SLOT yy (J203)	CABLE	407275		
	BLK AAx RW 08 (J124)	Uxx-SLOT yy (J203)	CABLE	407275		

DOCUMENT TITLE	SIZE	CODE. NO.	DOCUMENT NO.	REV
HARNESS ASSEMBLY, 1260-17, TTI	A	21793	407275	A
	DRN			SHEET 3 of 11

ENGINEERING WIRE LIST

WIRE	FROM	TO	TYPE	PART #	WIRE LEN	REFERENCE
	BLK AAx RW 09 (J125)	Uxx-SLOT yy (J203)	CABLE	407275		
	BLK AAx RW 10 (J126)	Uxx-SLOT yy (J203)	CABLE	407275		
	BLK AAx RW 11 (J127)	Uxx-SLOT yy (J203)	CABLE	407275		

This system wirelist serves as a template for incorporating this harness assembly into the overall system wirelist. It does not in any way affect the fabrication of this harness assembly.

DOCUMENT TITLE	SIZE	CODE. NO.	DOCUMENT NO.	REV
HARNESS ASSEMBLY, 1260-17, TTI	A	21793	407275	A
	DRN		SHEET 4 of 11	

ENGINEERING WIRE LIST

WIRE	FROM	TO	TYPE	PART #	WIRE LEN	REFERENCE
1	J106-3	J200-A1	RED	407260	41.5"	COMM 19
2	J106-1	J200-A2	BRN	407260	41.5"	NO 18
3	J105-2	J200-A3	BLK	407260	41.5"	NC 18
4	J105-4	J200-A4	WHT	407260	41.5"	COMM 17
5	J105-6	J200-A5	GRY	407260	41.5"	NO 16
6	J105-8	J200-A6	VIO	407260	41.5"	NC 16
7	J105-10	J200-A7	BLU	407260	41.5"	COMM 15
8	J104-9	J200-A8	GRN	407260	41.5"	NO 14
9	J104-7	J200-A9	YEL	407260	41.5"	NC 14
10	J104-5	J200-A10	ORN	407260	41.5"	COMM13
11	J104-3	J200-A11	RED	407260	41.5"	NO 12
12	J104-1	J200-A12	BRN	407260	41.5"	NC 12
13	J103-2	J200-A13	BLK	407260	41.5"	COMM 11
14	J103-4	J200-A14	WHT	407260	41.5"	NO 10
15	J103-6	J200-A15	GRY	407260	41.5"	NC 10
16	J103-8	J200-A16	VIO	407260	41.5"	COMM 09
17	J103-10	J200-A17	BLU	407260	41.5"	NO 08
18	J102-9	J200-A18	GRN	407260	41.5"	NC 08
19	J102-7	J200-A19	YEL	407260	41.5"	COMM 07
20	J102-5	J200-A20	ORN	407260	41.5"	NO 06
21	J102-3	J200-A21	RED	407260	41.5"	NC 06
22	J102-1	J200-A22	BRN	407260	41.5"	COMM 05
23	J101-2	J200-A23	BLK	407260	41.5"	NO 04
24	J101-4	J200-A24	WHT	407260	41.5"	NC 04
25	J101-6	J200-A25	GRY	407260	41.5"	COMM 03
26	J101-8	J200-A26	VIO	407260	41.5"	NO 02
27	J101-10	J200-A27	BLU	407260	41.5"	NC 02
28	J100-9	J200-A28	GRN	407260	41.5"	COMM 01
29	J100-7	J200-A29	YEL	407260	41.5"	NO 00
30	J100-5	J200-A30	ORN	407260	41.5"	NC 00
31	J100-3	J200-A31	RED	407260	41.5"	NC
32	J100-1	J200-A32	BRN	407260	41.5"	GND
33	J106-4	J200-B1	TAN	407260	41.5"	NO19
34	J106-2	J200-B2	TAN	407260	41.5"	NC 19
35	J105-1	J200-B3	TAN	407260	41.5"	COMM 18
36	J105-3	J200-B4	TAN	407260	41.5"	NO 17
37	J105-5	J200-B5	TAN	407260	41.5"	NC 17
38	J105-7	J200-B6	TAN	407260	41.5"	COMM 16
39	J105-9	J200-B7	TAN	407260	41.5"	NO 15
40	J104-10	J200-B8	TAN	407260	41.5"	NC 15
41	J104-8	J200-B9	TAN	407260	41.5"	COMM 14
42	J104-6	J200-B10	TAN	407260	41.5"	NO 13
43	J104-4	J200-B11	TAN	407260	41.5"	NC 13
44	J104-2	J200-B12	TAN	407260	41.5"	COMM 12
45	J103-1	J200-B13	TAN	407260	41.5"	NO 11
46	J103-3	J200-B14	TAN	407260	41.5"	NC 11
47	J103-5	J200-B15	TAN	407260	41.5"	COMM 10
48	J103-7	J200-B16	TAN	407260	41.5"	NO 09
DOCUMENT TITLE			SIZE	CODE. NO.	DOCUMENT NO.	REV
HARNESS ASSEMBLY, 1260-17, TTI			A	21793	407275	A
			DRN			SHEET 5 of 11

ENGINEERING WIRE LIST

WIRE	FROM	TO	TYPE	PART	WIRE LEN	REFERENCE
49	J103-9	J200-B17	TAN	407260	41.5"	NC 09
50	J102-10	J200-B18	TAN	407260	41.5"	COMM 08
51	J102-8	J200-B19	TAN	407260	41.5"	NO 07
52	J102-6	J200-B20	TAN	407260	41.5"	NC 07
53	J102-4	J200-B21	TAN	407260	41.5"	COMM 06
54	J102-2	J200-B22	TAN	407260	41.5"	NO 05
55	J101-1	J200-B23	TAN	407260	41.5"	NC 05
56	J101-3	J200-B24	TAN	407260	41.5"	COMM 04
57	J101-5	J200-B25	TAN	407260	41.5"	NO 03
58	J101-7	J200-B26	TAN	407260	41.5"	NC 03
59	J101-9	J200-B27	TAN	407260	41.5"	COMM 02
60	J100-10	J200-B28	TAN	407260	41.5"	NO 01
61	J100-8	J200-B29	TAN	407260	41.5"	NC 01
62	J100-6	J200-B30	TAN	407260	41.5"	COMM 00
63	J100-4	J200-B31	TAN	407260	41.5"	NC
64	J100-2	J200-B32	TAN	407260	41.5"	GND
65	J113-3	J201-A1	RED	407260	41.5"	COMM 59
66	J113-1	J201-A2	BRN	407260	41.5"	NO 58
67	J112-2	J201-A3	BLK	407260	41.5"	NC 58
68	J112-4	J201-A4	WHT	407260	41.5"	COMM 57
69	J112-6	J201-A5	GRY	407260	41.5"	NO 56
70	J112-8	J201-A6	VIO	407260	41.5"	NC 56
71	J112-10	J201-A7	BLU	407260	41.5"	COMM 55
72	J111-9	J201-A8	GRN	407260	41.5"	NO 54
73	J111-7	J201-A9	YEL	407260	41.5"	NC 54
74	J111-5	J201-A10	ORN	407260	41.5"	COMM 53
75	J111-3	J201-A11	RED	407260	41.5"	NO 52
76	J111-1	J201-A12	BRN	407260	41.5"	NC 52
77	J110-2	J201-A13	BLK	407260	41.5"	COMM 51
78	J110-4	J201-A14	WHT	407260	41.5"	NO 50
79	J110-6	J201-A15	CRY	407260	41.5"	NC 50
80	J110-8	J201-A16	VIO	407260	41.5"	COMM 49
81	J110-10	J201-A17	BLU	407260	41.5"	NO 48
82	109-9	J201-A18	GRN	407260	41.5"	NC 48
83	J109-7	J201-A19	YEL	407260	41.5"	COMM 47
84	J109-5	J201-A20	ORN	407260	41.5"	NO 46
85	J109-3	J201-A21	RED	407260	41.5"	NC 46
86	J109-1	J201-A22	BRN	407260	41.5"	COMM 45
87	J108-2	J201-A23	BLK	407260	41.5"	NO 44
88	J108-4	J201-A24	WHT	407260	41.5"	NC 44
89	J108-6	J201-A25	CRY	407260	41.5"	COMM 43
90	J108-8	J201-A26	VIO	407260	41.5"	NO 42
91	J108-10	J201-A~7	BLU	407260	41.5"	NC 42
92	J107-9	J201-A28	GRN	407260	41.5"	COMM 41
93	J107-7	J201-A29	YEL	407260	41.5"	NO 40
94	J107-5	J201-A30	ORN	407260	41.5"	NC 40
95	J107-3	J201-A31	RED	407260	41.5"	NC GND
96	J107-1	J201-A32	BRN	407260	41.5"	
DOCUMENT TITLE						
HARNES ASSEMBLY, 1260-17, TTI			SIZE	CODE. NO.	DOCUMENT NO.	REV
			A	21793	407275	A
			DRN	SHEET 6 of 11		

ENGINEERING WIRE LIST

WIRE	FROM	TO	TYPE	PART #	WIRE LEN	REFERENCE
97	J113-4	J201-B1	TAN	407260	41.5"	NO 59
98	J113-2	J201-B2	TAN	407260	41.5"	NC 59
99	J112-1	J201-B3	TAN	407260	41.5"	COMM 58
100	J112-3	J201-B4	TAN	407260	41.5"	NO 57
101	J112-5	J201-B5	TAN	407260	41.5"	NC 57
102	J112-7	J201-B6	TAN	407260	41.5"	COMM 56
103	J112-9	J201-B7	TAN	407260	41.5"	NO 55
104	J111-10	J201-B8	TAN	407260	41.5"	NC 55
105	J111-8	J201-B9	TAN	407260	41.5"	COMM 54
106	J111-6	J201-B10	TAN	407260	41.5"	NO 53
107	J111-4	J201-B11	TAN	407260	41.5"	NC 53
108	J111-2	J201-B12	TAN	407260	41.5"	COMM 52
109	J110-1	J201-B13	TAN	407260	41.5"	NO 51
110	J110-3	J201-B14	TAN	407260	41.5"	NC 51
111	J110-5	J201-B15	TAN	407260	41.5"	COMM 50
112	J110-7	J201-B16	TAN	407260	41.5"	NO 49
113	J110-9	J201-B17	TAN	407260	41.5"	NC 49
114	J109-10	J201-B18	TAN	407260	41.5"	COMM 48
115	J109-8	J201-B19	TAN	407260	41.5"	NO 47
116	J109-6	J201-B20	TAN	407260	41.5"	NC 47
117	J109-4	J201-B21	TAN	407260	41.5"	COMM 46
118	J109-2	J201-B22	TAN	407260	41.5"	NO 45
119	J108-1	J201-B23	TAN	407260	41.5"	NC 45
120	J108-3	J201-B24	TAN	407260	41.5"	COMM 44
121	J108-5	J201-B25	TAN	407260	41.5"	NO 43
122	J108-7	J201-B26	TAN	407260	41.5"	NC 43
123	J108-9	J201-B27	TAN	407260	41.5"	COMM 42
124	J107-10	J201-B28	TAN	407260	41.5"	NO 41
125	J107-8	J201-B29	TAN	407260	41.5"	NC 41
126	J107-6	J201-B30	TAN	407260	41.5"	COMM 40
127	J107-4	J201-B31	TAN	407260	41.5"	NC
128	J107-2	J201-B32	TAN	407260	41.5"	GND
129	J120-3	J202-A1	RED	407260	41.5"	COMM 39
130	J120-1	J202-A2	BRN	407260	41.5"	NO 38
131	J119-2	J202-A3	BLK	407260	41.5"	NC 38
132	J119-4	J202-A4	WHT	407260	41.5"	COMM 37
133	J119-6	J202-A5	CRY	407260	41.5"	NO 36
134	J119-8	J202-A6	VIO	407260	41.5"	NC 36
135	J119-10	J202-A7	BLU	407260	41.5"	COMM 35
136	J118-9	J202-A8	GRN	407260	41.5"	NO 34
137	J118-7	J202-A9	YEL	407260	41.5"	NC 34
138	J118-5	J202-A10	ORN	407260	41.5"	COMM 33
139	J118-3	J202-A11	RED	407260	41.5"	NO 32
140	J118-1	J202-A12	BRN	407260	41.5"	NC 32
141	J117-2	J202-A13	BLK	407260	41.5"	COMM 31
142	J117-4	J202-A14	WHT	407260	41.5"	NO 30
DOCUMENT TITLE						
HARNESS ASSEMBLY, 1260-17, TTI			SIZE	CODE. NO.	DOCUMENT NO.	REV
HARNESS ASSEMBLY, 1260-17, TTI			A	21793	407275	A
			DRN		SHEET 7 of 11	

ENGINEERING WIRE LIST

WIRE	FROM	TO	TYPE	PART #	WIRE LEN	REFERENCE
143	J117-6	J202-A15	GRY	407260	41.5"	NC 30
144	J117-8	J202-A16	VIO	407260	41.5"	COMM 29
145	J117-10	J202-A17	BLU	407260	41.5"	NO 28
146	J116-9	J202-A18	GRN	407260	41.5"	NC 28
147	J116-7	J202-A19	YEL	407260	41.5"	COMM 27
148	J116-5	J202-A20	ORN	407260	41.5"	NO 26
149	J116-3	J202-A21	RED	407260	41.5"	NC 26
150	J116-1	J202-A22	BRN	407260	41.5"	COMM 25
151	J115-2	J202-A23	BLK	407260	41.5"	NO 24
152	J115-4	J202-A24	WHT	407260	41.5"	NC 24
153	J115-6	J202-A25	GRY	407260	41.5"	COMM 23
154	J115-8	J202-A26	VIO	407260	41.5"	NO 22
155	J115-10	J202-A27	BLU	407260	41.5"	NC 22
156	J114-9	J202-A28	GRN	407260	41.5"	COMM 21
157	J114-7	J202-A29	YEL	407260	41.5"	NO 20
158	J114-5	J202-A30	ORN	407260	41.5"	NC 20
159	J114-3	J202-A31	RED	407260	41.5"	NC
160	J114-1	J202-A32	BRN	407260	41.5"	GND
161	J120-4	J202-B1	TAN	407260	41.5"	NO 39
162	J120-2	J202-B2	TAN	407260	41.5"	NC 39
163	J119-1	J202-B3	TAN	407260	41.5"	COMM 38
164	J119-3	J202-B4	TAN	407260	41.5"	NO 37
165	J119-5	J202-B5	TAN	407260	41.5"	NC 37
166	J119-7	J202-B6	TAN	407260	41.5"	COMM 36
167	J119-9	J202-B7	TAN	407260	41.5"	NO 35
168	J118-10	J202-B8	TAN	407260	41.5"	NC 35
169	J118-8	J202-B9	TAN	407260	41.5"	COMM 34
170	J118-6	J202-B10	TAN	407260	41.5"	NO 33
171	J118-4	J202-B11	TAN	407260	41.5"	NC 33
172	J118-2	J202-B12	TAN	407260	41.5"	COMM 32
173	J117-1	J202-B13	TAN	407260	41.5"	NO 31
174	J117-3	J202-B14	TAN	407260	41.5"	NC 31
175	J117-5	J202-B15	TAN	407260	41.5"	COMM 30
176	J117-7	J202-B16	TAN	407260	41.5"	NO 29
177	J117-9	J202-B17	TAN	407260	41.5"	NC 29
178	J116-10	J202-B18	TAN	407260	41.5"	COMM 28
179	J116-8	J202-B19	TAN	407260	41.5"	NO 27
180	J116-6	J202-B20	TAN	407260	41.5"	NC 27
181	J116-4	J202-B21	TAN	407260	41.5"	COMM 26
182	J116-2	J202-B22	TAN	407260	41.5"	NO 25
183	J115-1	J202-B23	TAN	407260	41.5"	NC 25
184	J115-3	J202-B24	TAN	407260	41.5"	COMM 24
185	J115-5	J202-B25	TAN	407260	41.5"	NO 23
186	J115-7	J202-B26	TAN	407260	41.5"	NC 23
187	J115-9	J202-B27	TAN	407260	41.5"	COMM 22
188	J114-10	J202-B28	TAN	407260	41.5"	NO 21
189	J114-8	J202-B29	TAN	407260	41.5"	NC 21
190	J114-6	J202-B30	TAN	407260	41.5"	COMM 20
DOCUMENT TITLE			SIZE	CODE. NO.	DOCUMENT NO.	REV
HARNESS ASSEMBLY, 1260-17, TTI			A	21793	407275	A
			DRN		SHEET 8 of 11	

ENGINEERING WIRE LIST

WIRE	FROM	TO	TYPE	PART #	WIRE LEN	REFERENCE
191	J114-4	J202-B31	TAN	407260	41.5"	NC
192	J114-2	J202-B32	TAN	407260	41.5"	GND
193	J127-3	J203-A1	RED	407260	41.5"	COMM 79
194	J127-1	J203-A2	BRN	407260	41.5"	NO 78
195	J126-2	J203-A3	BLK	407260	41.5"	NC 78
196	J126-4	J203-A4	WHT	407260	41.5"	COMM 77
197	J126-6	J203-AS	GRY	407260	41.5"	NO 76
198	J126-8	J203-A6	VIO	407260	41.5"	NC 76
199	J126-10	J203-A7	BLU	407260	41.5"	COMM 75
200	J125-9	J203-A8	GRN	407260	41.5"	NO 74
201	J125-7	J203-A9	YEL	407260	41.5"	NC 74
202	J125-5	J203-A10	ORN	407260	41.5"	COMM 73
203	J125-3	J203-A11	RED	407260	41.5"	NO 72
204	J125-1	J203-A12	BRN	407260	41.5"	NC 72
205	J124-2	J203-A13	BLK	407260	41.5"	COMM 71
206	J124-4	J203-A14	WHT	407260	41.5"	NO 70
207	J124-6	J203-A15	GRY	407260	41.5"	NC 70
208	J124-8	J203-A16	VIO	407260	41.5"	COMM 69
209	J124-10	J203-A17	BLU	407260	41.5"	NO 68
210	J123-9	J203-A18	GRN	407260	41.5"	NC 68
211	J123-7	J203-A19	YEL	407260	41.5"	COMM 67
212	J123-5	J203-A20	ORN	407260	41.5"	NO 66
213	J123-3	J203-A21	RED	407260	41.5"	NC 66
214	J123-1	J203-A22	BRN	407260	41.5"	COMM 65
215	J122-2	J203-A23	BLK	407260	41.5"	NO 64
216	J122-4	J203-A24	WHT	407260	41.5"	NC 64
217	J122-6	J203-A25	GRY	407260	41.5"	COMM 63
218	J122-8	J203-A26	VIO	407260	41.5"	NO 62
219	J122-10	J203-A27	BLU	407260	41.5"	NC 62
220	J121-9	J203-A28	GRN	407260	41.5"	COMM 61
221	J121-7	J203-A29	YEL	407260	41.5"	NO 60
222	J121-5	J203-A30	ORN	407260	41.5"	NC 60
223	J121-3	J203-A31	RED	407260	41.5"	NC
224	J121-1	J203-A32	BRN	407260	41.5"	GND
225	J127-4	J203-B1	TAN	407260	41.5"	NO 79
226	J127-2	J203-B2	TAN	407260	41.5"	NC 79
227	J126-1	J203-B3	TAN	407260	41.5"	COMM 78
228	J126-3	J203-B4	TAN	407260	41.5"	NO 77
229	J126-5	J203-B5	TAN	407260	41.5"	NC 77
230	J126-7	J203-B6	TAN	407260	41.5"	COMM 76
231	J126-9	J203-B7	TAN	407260	41.5"	NO 75
232	J125-10	J203-B8	TAN	407260	41.5"	NC 75
233	J125-8	J203-B9	TAN	407260	41.5"	COMM 74
234	J125-6	J203-B10	TAN	407260	41.5"	NO 73
235	J125-4	J203-B11	TAN	407260	41.5"	NC 73
236	J125-2	J203-B12	TAN	407260	41.5"	COMM 72
DOCUMENT TITLE			SIZE	CODE. NO.	DOCUMENT NO.	REV
HARNES ASSEMBLY, 1260-17, TTI			A	21793	407275	A
			DRN			SHEET 9 of 11

ENGINEERING WIRE LIST

WIRE	FROM	TO	TYPE	PART #	WIRE LEN	REFERENCE
237	J124-1	J203-B13	TAN	407260	41.5"	NO 71
238	J124-3	J203-B14	TAN	407260	41.5"	NC 71
239	J124-5	J203-B15	TAN	407260	41.5"	COMM 70
240	J124-7	J203-B16	TAN	407260	41.5"	NO 69
241	J124-9	J203-B17	TAN	407260	41.5"	NC 69
242	J123-10	J203-B18	TAN	407260	41.5"	COMM 68
243	J123-8	J203-B19	TAN	407260	41.5"	NO 67
244	J123-6	J203-B20	TAN	407260	41.5"	NC 67
245	J123-4	J203-B21	TAN	407260	41.5"	COMM 66
246	J123-2	J203-B22	TAN	407260	41.5"	NO 65
247	J122-1	J203-B23	TAN	407260	41.5"	NC 65
248	J122-3	J203-B24	TAN	407260	41.5"	COMM 64
249	J122-5	J203-B25	TAN	407260	41.5"	NO 63
250	J122-7	J203-B26	TAN	407260	41.5"	NC 63
251	J122-9	J203-B27	TAN	407260	41.5"	COMM 62
252	J121-10	J203-B28	TAN	407260	41.5"	NO 61
253	J121-8	J203-B29	TAN	407260	41.5"	NC 61
254	J121-6	J203-B30	TAN	407260	41.5"	COMM 60
255	J121-4	J203-B31	TAN	407260	41.5"	NC
256	J121-2	J203-B32	TAN	407260	41.5"	GND
257	J106-5	NO CONNECT				
258	J106-6	NO CONNECT				
259	J106-7	NO CONNECT				
260	J106-8	NO CONNECT				
261	J106-9	NO CONNECT				
262	J106-10	NO CONNECT				
263	J113-5	NO CONNECT				
264	J113-6	NO CONNECT				
265	J113-7	NO CONNECT				
266	J113-8	NO CONNECT				
267	J113-9	NO CONNECT				
268	J113-10	NO CONNECT				
269	J120-5	NO CONNECT				
270	J120-6	NO CONNECT				
271	J120-7	NO CONNECT				
272	J120-8	NO CONNECT				
273	J120-9	NO CONNECT				
274	J120-10	NO CONNECT				
275	J127-5	NO CONNECT				
276	J127-6	NO CONNECT				
277	J127-7	NO CONNECT				
278	J127-8	NO CONNECT				
DOCUMENT TITLE						
HARNESS ASSEMBLY, 1260-17, TTI			SIZE	CODE. NO.	DOCUMENT NO.	REV
			A	21793	407275	A
			DRN		SHEET 10 of 11	

ENGINEERING WIRE LIST

WIRE	FROM	TO	TYPE	PART #	WIRE LEN	REFERENCE
279	J127-9	NO CONNECT				
280	J127-10	NO CONNECT				

DOCUMENT TITLE					SIZE	CODE. NO.	DOCUMENT NO.	REV
HARNESS ASSEMBLY, 1260-17, TTI					A	21793	407275	A
					DRN			SHEET 11 of 11